



Your Local Community Network

Shepton

Please Note



This event is being photographed for publicity purposes.

Images taken at this venue may be used by Somerset Council staff for promotional materials, including our website, press releases and social media posts.

If you do not want your image used, please let a member of the Local Community Network Team know. **Thank you.**

Meeting Order

Housekeeping

Agenda

1. Welcome and apologies
2. Notes from the previous meeting and actions
3. *Brighter Days – pilot for carers - Make the Sunshine*
4. 'Who is who in the organisation'
 - Adult Social Care
5. Community Solutions Seekers – Community Council for Somerset
6. *A371 Forum update*
7. Local Plan mini-workshop feedback
8. Working Groups update
9. *Next steps*
 - AGM plan discussion
 - Actions
 - Dates of the next meetings

AOB

Brighter Days – Make the Sunshine



Sign up to Brighter Days
a free Creative Connections
Service for Carers



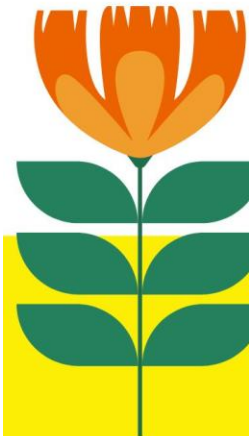
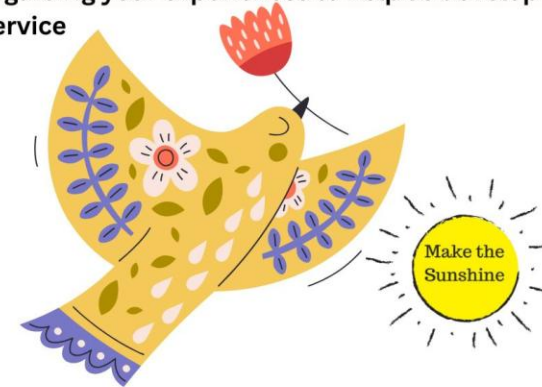
Make the Sunshine is a not-for-profit organisation. We are piloting a new Creative Connections Service for Carers.

- This trial is open to unpaid carers in Mendip.
- It is completely free to sign up
- As part of the trial you will receive a series of packages filled with: essential information, thoughtful activities that tie into the seasons, small treats, and connections to local communities.

Find out more
or sign up here



In return we ask you to complete some feedback regarding your experiences to help us develop this service



makethesunshine.co.uk/brighterdays

hello@makethesunshine.co.uk

www.makethesunshine.co.uk



Make the Sunshine is a not-for-profit community organisation dedicated to using creativity to bring hope, wellbeing and social connection

Brighter Days – Carer Packs Info Video

Somerset Adult Social Care

Who's who, referral and assessment process.

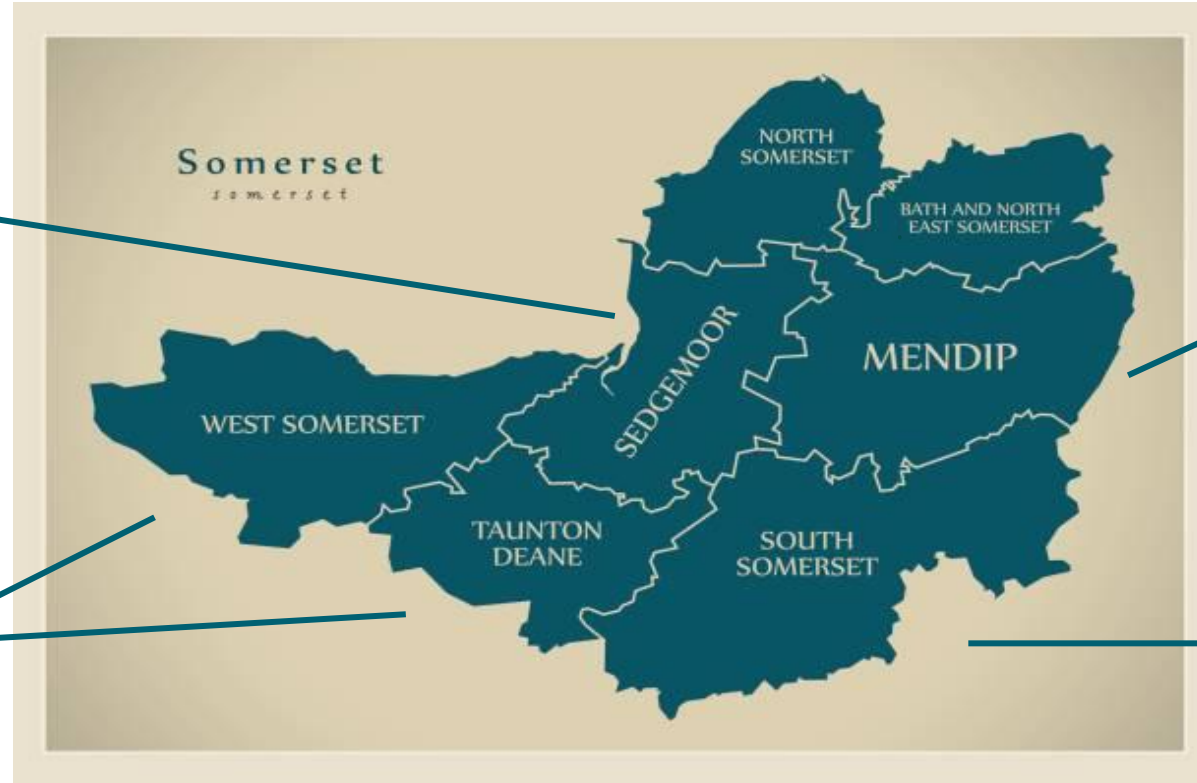


Somerset
Council

Neighbourhoods

Bridgwater and
North Sedgemoor

Taunton and West
Somerset



Mendip

South Somerset

Strategic Manager – Sarah Skeet



Somerset teams

Somerset Council Customer Services

Mental Health

Safeguarding

Preparing For Adulthood

Hospital Interface Service (HIS)

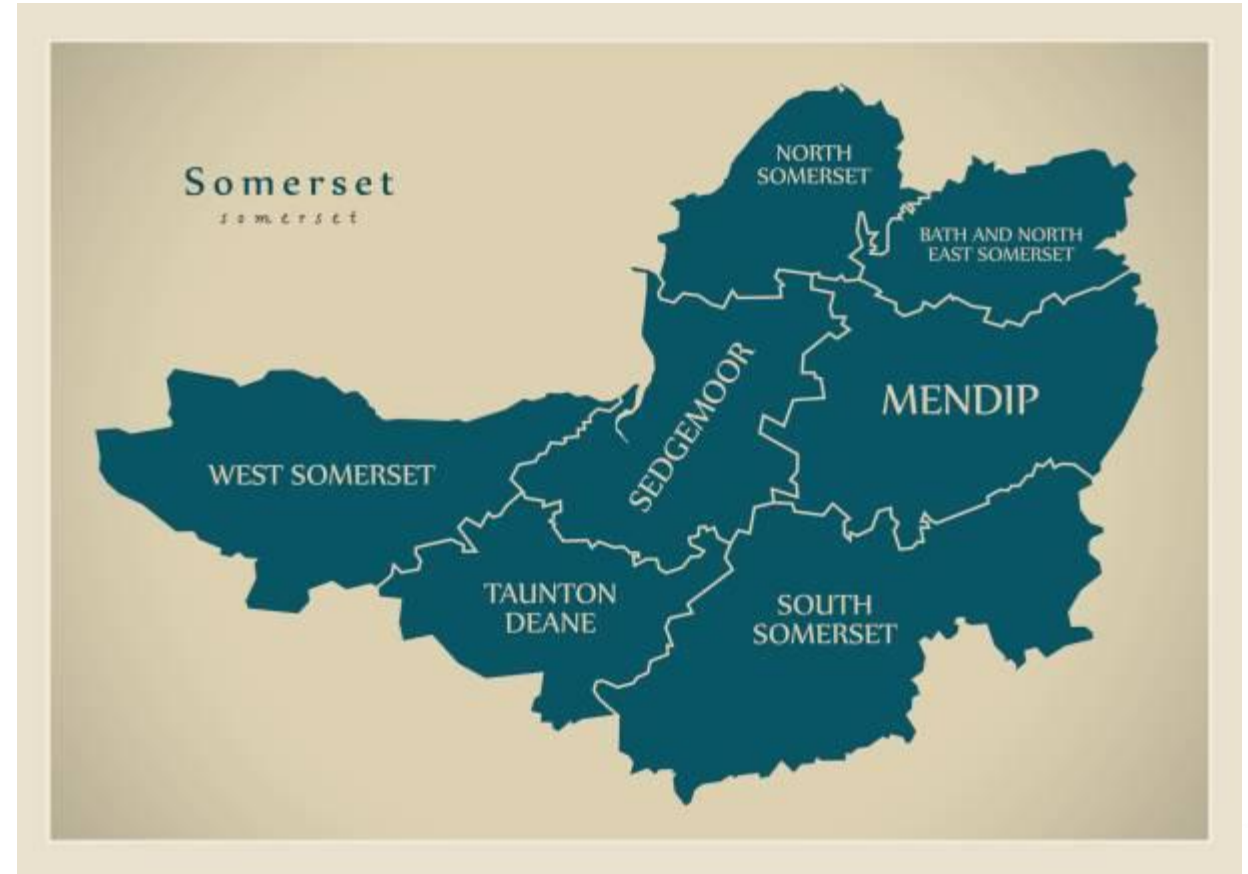
Intermediate Care Pathways

**Somerset Independence Living Centres
(SILC)**

Learning Disabilities - East Somerset

Learning Disabilities - West Somerset

Plus finance teams, sourcing care,
commissioning, quality assurance etc



Mendip Neighbourhood Team

Split into two localities – East and West Mendip

Each locality consists of –

Advanced Practitioner Social Worker with oversight of staff, demand and performance

6 Social Workers

7 Adult Social Care Practitioners

Business support staff

East Mendip covers Shepton, Frome and surrounding villages

West Mendip covers Street, Glastonbury, Wells and surrounding villages

Mendip Neighbourhood Team link roles...

- **GP surgeries** – Adult Social Care Practitioners in every practices weekly Multi-disciplinary Team meetings (BANES GP surgeries included in this)
- **Hospital Discharges** – Advanced Practitioner linking with all hospital teams to aid smoother discharges
- **Continuing Health Care Funding** – Social Worker expert in the team, weekly meetings held with health
- **Housing and homeless team** – Adult Social Care Practitioner main link
- **Extra Care Housing** – Social Worker with oversight of the schemes in Mendip**Care Homes** – link worker in each home we have a contract with
- **Care Providers** – Trusted Provider link worker as direct contact and regular meetings with managers
- **Direct Payments** – worker identified as expert to ensure community has consistency of information
- **Somerset Independent Living Centre** – Under same directorate and on same campus, assistive technology
- **Somerset Connect** – Village agents attending our daily morning meetings to assist with community integration
- **Frome Farmers Market** – Social Worker working with our health colleagues to support this community
- **One Team Representative** - Social Worker attending Multi-disciplinary meetings with housing, police, probation, safeguarding
- **Childrens Services** – Adult Social Care Practitioner linking directly with Childrens Services to ensure joined up approach for families with involvement from both services
- **Carers Champions** – Adult Social Care Practitioner as carers assessor

We would welcome any other suggestions for linking with key organisations and groups in your parishes.

Referral Process

Somerset Council Customer Services



Adult Social Care Triage



Risk prioritised waiting list



Collaborative and Personalised Care Act Assessment



Multidisciplinary decision-making “peer forum”



Financial Assessment and Benefits Team Referral



Personalised Care and Support plan



Care Act Eligibility



- Adult Social Care has a duty to assess needs under the Care Act 2014 where it appears that an adult may have needs for care and support.
- Needs meet the eligibility criteria if they arise from a physical or mental impairment or illness **AND** as a result of those needs the individual is unable to achieve two or more of the specified outcomes **AND** as a consequence, there is (or is likely to be) a significant impact upon the individual's wellbeing.

Specified outcomes:

- Managing and maintaining nutrition
- Maintaining personal hygiene
- Managing toilet needs
- Being appropriately clothed
- Being able to make use of the adult's home safely
- Maintaining a habitable home environment
- Developing and maintaining family or other personal relationships
- Accessing and engaging in work, training, education or volunteering
- Making use of necessary facilities or services in the local community including public transport, and recreational facilities or services
- Carrying out any caring responsibilities the adult has for a child

Care Act Assessments

- Assessments involve the individual, their carer and anyone else the individual wishes to involve. If the adult lacks capacity to ask the local authority to involve someone else, it can involve anyone who appears to be interested in the adult's welfare
- Assessments consider the wishes and feelings of the individual and the outcomes that they wish to achieve in their day-to-day life
- During assessment, consideration is given to appropriate available community services that could meet eligible needs as well as more formal, funded services via the Local Authority.
- When Adult Social Care make funding decisions, each request is considered on an individual, case-by-case basis
- We work collaboratively with other professionals to form a holistic assessment of a person's needs

Carer's Assessments

A carer can request an assessment in their own right at any time, even if the adult needing care does not wish to have a Care Act assessment or access services

A carer's needs meet the eligibility criteria if the needs arise as a consequence of providing necessary care for an adult **AND** the effect of the carer's needs is that any of the specified circumstances (see below) apply to the carer **AND** as a consequence, there is (or is likely to be) a significant impact on the carer's well-being.

Specified circumstances:

- The carer's physical/mental health is (or is at risk of) deteriorating
- The carer is unable to achieve any of the following outcomes:
 - Carrying out any caring responsibilities the carer has for a child
 - Providing care to other persons for whom the carer provides care
 - Maintaining a habitable home environment in the carer's home (whether or not this is also the home of the adult needing care)
 - Managing and maintaining nutrition
 - Developing and maintaining family or other personal relationships
 - Engaging in work, training, education or volunteering
 - Making use of necessary facilities or services in the local community, including recreational facilities/services
 - Engaging in recreational activities

Carer's can choose to have a personal budget to meet eligible needs, carer's budgets are not financially assessed.

If the identified service includes personal care for adult needing care, this cannot be provided via a carer's budget and must be part of the adult needing care's personal budget



Funding

- The limit set by the Department of Health and Social Care for receiving help with care fees is £23,250 - this is called the threshold amount. If you have more than this amount in capital and/or own a 2nd property/land, you will be expected to pay the full cost of meeting your care and support needs but are still entitled to an assessment from Adult Social Care.
- When an individual's capital falls below threshold, the Local Authority must carry out a financial assessment. The Care and Support Statutory Guidance 2014 (10.27) states that the Local Authority can consider its own finances and budgetary position when determining how to meet needs and must comply with its related public law duties, which includes ensuring that the funding available to the local authority is sufficient to meet the needs of the entire local population.
- It also states that “The authority may take decisions on a case-by-case basis which weigh up the total costs of different potential options for meeting needs and include the cost as a relevant factor in deciding between suitable alternative options for meeting needs. This does not mean choosing the cheapest option; but the one which delivers the outcomes desired for the best value.” Following assessment, the market position will be explored to ensure the best value service provision is identified to meet an individual’s eligible care and support needs. This may mean that the Local Authority will not continue funding the same service or level of service that an individual was privately funding previously.
- For care in the community, please contact Adult Social Care when capital reaches around £25,000. If you are residing in a care home permanently, please contact Adult Social Care when capital reaches £40,000. This gives us time to complete financial and eligibility assessments prior to funds reaching the threshold amount.



Self-funding your care home placement

Things to consider when thinking about moving into a care home and funding this privately:

- Would you like an assessment from Adult Social Care to support you in your decision? If you have capital less than £40,000 please contact Adult Social Care for an assessment prior to moving into a care home.
- Have you considered seeking independent financial advice?
- Have you explored options to support you to remain at home?
- Has alternate accommodation been explored (e.g. sheltered or extra care housing)?
- Are you considering the most appropriate category of care home?
- Will the care home accept the local authority rates when your capital has depleted to the threshold amount?

Further information

Public information sheets are available online at www.somerset.gov.uk/care-and-support-for-adults/adult-social-care-information-sheets

Care Act 2014: www.legislation.gov.uk/ukpga/2014/23/contents

Care and support statutory guidance www.gov.uk/government/publications/care-act-statutory-guidance/care-and-support-statutory-guidance

Carers www.somersetcarers.org

Paying for Permanent Residential Care | Paying For a Care Home www.ageuk.org.uk/information-advice/care/paying-for-care/paying-for-a-care-home

Paying for care at home www.ageuk.org.uk/information-advice/care/paying-for-care/paying-for-homecare

Somerset Council Customer Services: **0300 123 2224**

Community Solution Seekers

Community Council for Somerset

4 LCN areas – Dowsborough, Shepton, Yeovil, Levels and Moors
Eight interactive, face-to-face sessions in each location.

These sessions will be led by expert facilitators and designed to:

- Identify local health and wellbeing challenges and opportunities
- Develop joint community action plans
- Equip participants with skills and knowledge to drive change
- Each session will build on the last
- Light refreshments will be provided.

Issues and ideas will be shared with the Local Community Network to find joint solutions

[Message from Sophie Cowdell – Shepton area facilitator](#)

Community Solution Seekers

Community Council for Somerset

Who should get involved?

We warmly invite everyone interested in collaborating and making a difference:

- Interested residents
- Community leaders (formal or informal eg members of local groups such as WI, Gardening Club, PTA, Coffee Morning, Knit and Natter etc.)
- Commissioners of local services with local knowledge
- Local GP surgery/clinic representatives
- Health, housing, and social services professionals
- Local faith groups
- Parish/Town Councillors interested in community development
- Voluntary and charity organisations operating in these locations

[Community Solution Seekers | CCS Community Council for Somerset](#)

A371 Forum Discussion

Report from Cllr Claire Sully

Fresh Approach to Road Safety:

Community and Business Collaboration Inspires New Way to Protect Our Roads

Purpose

to promote a new, more integrated approach—encouraging different stakeholders to work together, share knowledge, and develop innovative solutions in partnership with Highways to address road safety challenges

Recent progress on the A371 highlighted

speed restrictions, enhanced signage, and targeted safety measures—achieved through community engagement and guided by expert advice from Somerset Council and the Police, all with the shared goal of reducing accidents and saving lives

A371 Forum Discussion

Report from Cllr Claire Sully

Key Topics and Discussions

- **Inspired keynote from Richard Clothier, Wyke Farm**
- **Ansford Parish Council Case Study**
- **The Police Perspective with Dan Cox**
- **Planning ahead**

The forum reinforced a fresh, collaborative approach—bringing together communities, businesses, and authorities—to learn from each other and implement practical solutions. Strengthening relationships, expanding engagement, using open data, and leveraging new technologies will be central to this strategy.

A371 Forum Discussion

Report from Cllr Claire Sully

Resources

- Help us promote safer roads: Submit your JourneyCam footage: www.avonandsomerset.police.uk/opsnap
- The Vehicles and Roads section provides a reporting tool for all road related incidents and concern: [Report | Avon and Somerset Police](#)
- The Traffic Choices website offers a good insight to traffic calming and road safety initiatives: [Home | Traffic Choices – aiding traffic scheme decisions](#)
- Crimestoppers: [Giving information | Crimestoppers](#)
- Fatal5 Campaign: [Fatal Five](#)
- Mature Driver Talks: [Mature Driver Talks](#)
- Motorcyclist safety initiative: [Raise Your Ride](#)
- Raise Your Drive Workshops: [Raise Your Drive workshop – Police Referred Course](#)

Local Plan mini-workshop

Feedback

The workshop held on 3 March 2025 focused on 8 areas:

- 1. Decent Homes for All**
- 2. Shops and Services**
- 3. Health and Wellbeing**
- 4. Culture, Community and Play**
- 5. Sustainable and Resilient Places**
- 6. Character, Heritage and Design**
- 7. Movement and Travel**
- 8. Education and Employment**

Working Groups

Updates

Highways Working Group

- **Hold the date – 29 May 2025 – 2pm-4pm**
- Topics for discussion identified at last meeting:
 - Bridges needing repair
 - Plans for drains/gullies clearing
 - Flowchart of the comms system with the Highways
 - Quality control of contractors
 - Advice to residents re road safety, parking at junctions in particular
 - Liability issues re street signs – how are diversion signs being
 - Economic regeneration – re stiles being removed
 - Planning around Stoke St Michael and Holcombe and effect on traffic

Working Groups

Updates

Community Transport

- Laura Miller, Connect Somerset
- Hold the Date – 24 June 2025 – 2pm-4pm

Active Travel

- Led across LCNs – interest in learning from the Strawberry Line community engagement in the Shepton Area

Shepton Community Hospital

- Cllr Jane Nicklin – more details to follow

Health and Wellbeing

- Currently sessions are facilitated by CCS
- Considerations following completion of the CCS project

Next steps

AGM plan discussion

in-person only event

7 July 2025

7pm

Council Chamber, Council Offices, Shepton Mallet

- Format
- Speaker
- Activities

Actions

Dates of next meetings

AOB