

**Connect
Somerset**



Connect Somerset is a partnership between Somerset Council, Somerset NHS, Voluntary, Community, Faith and Social Enterprises, and Schools, Colleges and Early Years settings

Importance of communities...

- “Building community power is essential... for two reasons.
First, tackling deprivation is urgent, so we need to harness and mobilise every contribution that can be made and there are **resources, relationships, assets, energy** and **compassion** to tap into in neighbourhoods.
Second, **community life can reach parts that the state cannot**, and provide the relationships, purpose and connection that make it more likely that life goes well.
- “But this is not about the state getting out of the way. **This work will only succeed where community power meets a like-minded local state.** That requires an openness to shifting culture and ethos toward more relational, human centred and no-wrong-door ways of working that support people to get the help they need when they need it, rather than being told to come back when a threshold has been surpassed. It also requires a commitment to **building community wealth and power**, to make a sustained impact on reducing hardship.”



Cost-of-living crisis for residents

45%

Somerset adults finding it difficult to pay bills – that's 216,000 people

21,000

Children in poverty

Those **most marginalised** in society have least ability to weather the cost-of-living crisis

17.7%

Households with food insecurity

90%

Families on Universal Credit cannot afford basics

6%

Not eaten for a day in last month because of cost

9.5 years

Deprivation gap for male length of life, 7.7 years for females

19%

Supermarket inflation in one year

49%

Spending more on energy, 44% spending more on food



Context



Next steps for integrating primary care: Fuller Stocktake report

Commissioned by NHS England and NHS Improvement from Dr Claire Fuller, CEO (designate) Surrey Heartlands ICS


MAY 2022

The Hewitt Review

An independent review of integrated care systems


Rt Hon Patricia Hewitt

Published 4 April 2023



Council Plan
2023 - 2027

Our vision and priorities for Somerset Council




Adult Social Care Strategy 2023-26




Blueprint for Connect Somerset

2023 to 2030

DRAFT Nov 23 v02



Department for Levelling Up, Housing & Communities




Department for Education

Early Help System Guide

A toolkit to assist local strategic partnerships responsible for their Early Help System

March 2022
Department for Levelling Up, Housing and Communities
Department for Education



HM Government

Family Hubs and Start for Life programme guide

August 2022

The Family Hubs and Start for Life Programme is jointly overseen by the Department of Health and Social Care and the Department for Education.



our SOMERSET Together we care



Somerset Council

NHS

Our ambition for a **healthier future** in Somerset 2023-2028

INTEGRATED HEALTH AND CARE STRATEGY FOR SOMERSET

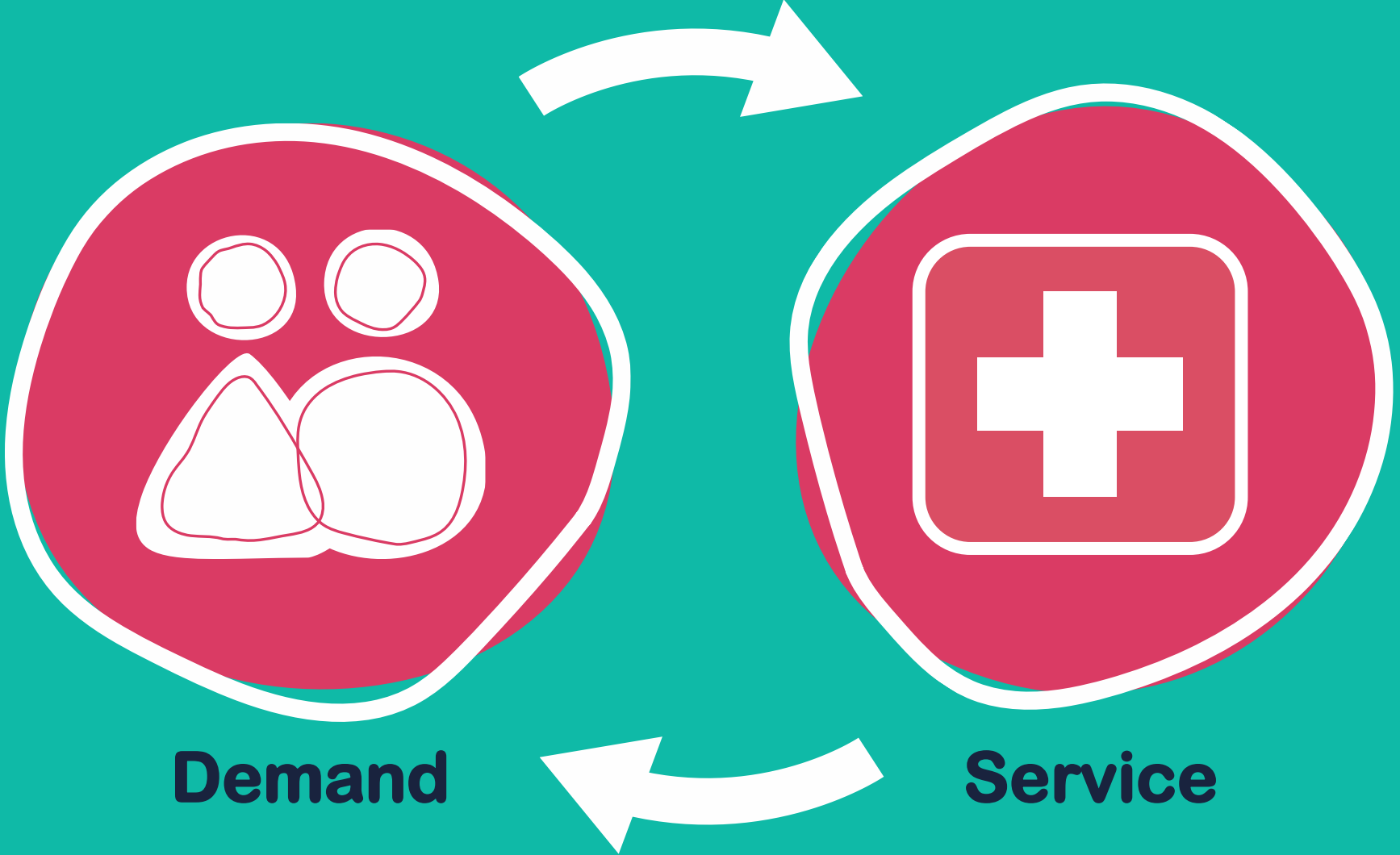
An Education for Life Strategy for Somerset



Somerset Council

2023 - 28

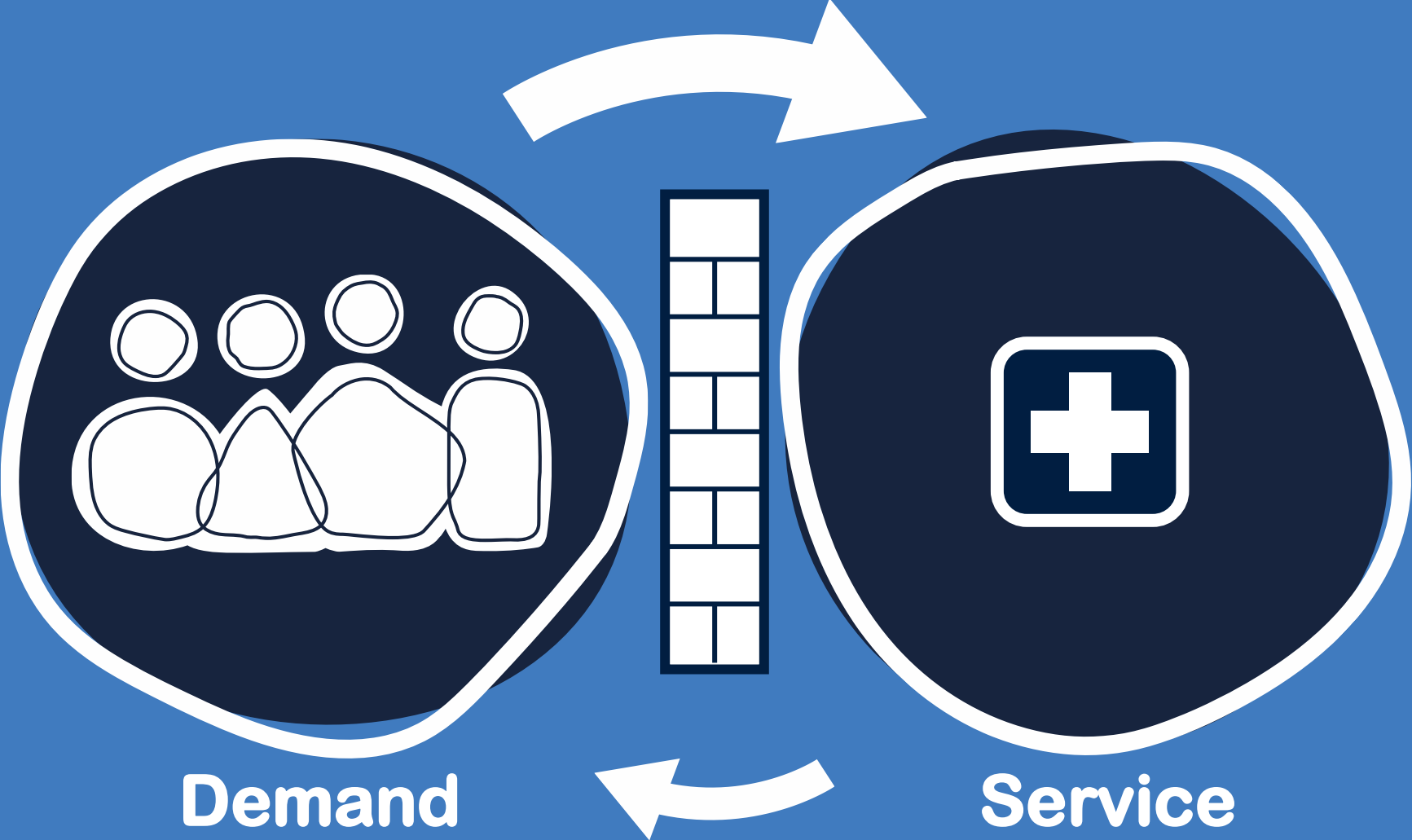
Demand



Demand

Service

Challenge



Why talk about systems?

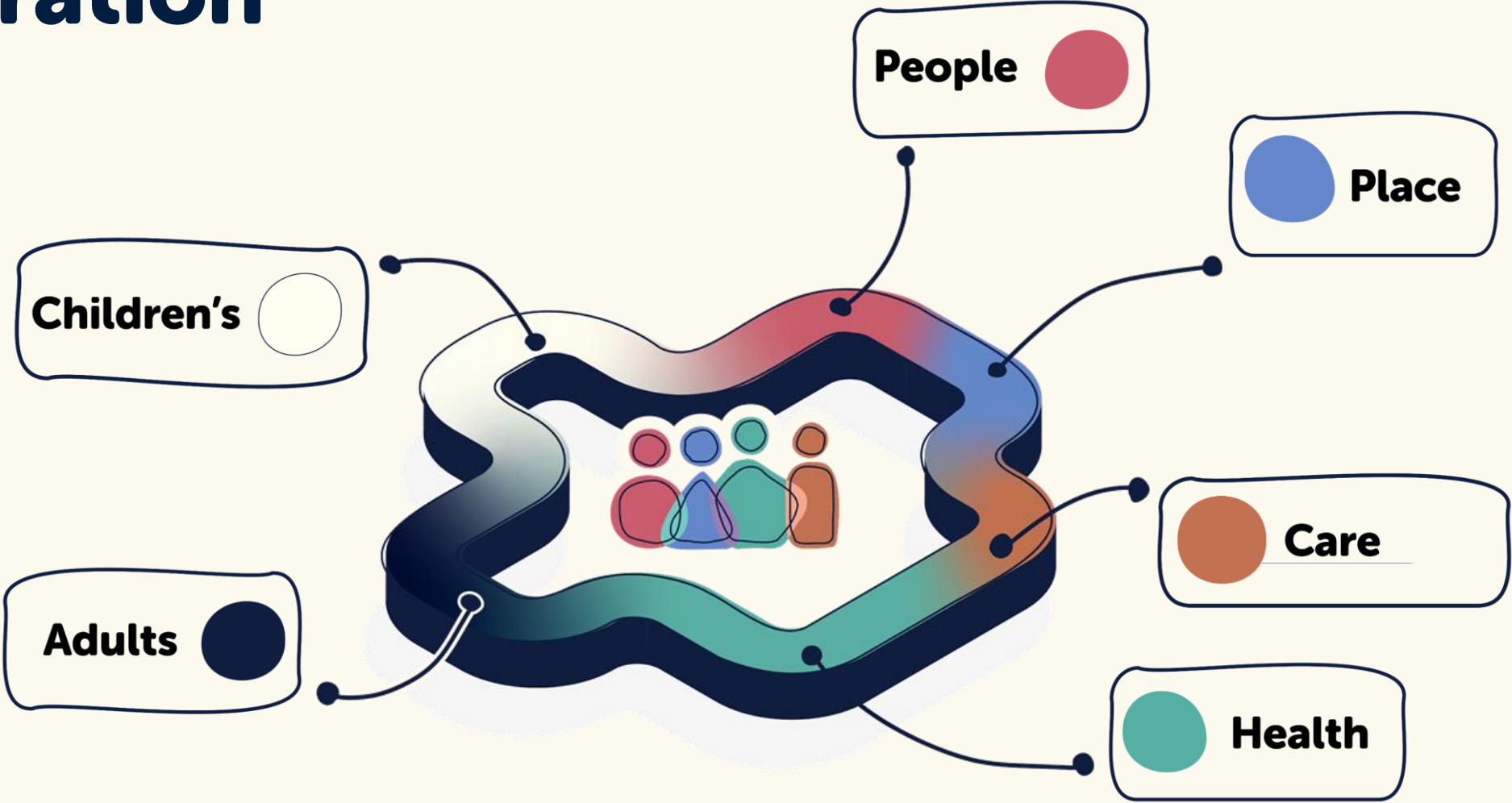
- Dr Ackoff's example of a car
- Let's build the best car in the world. Take the best brakes, best controls, best tyres, best gearbox, etc and put it together.
- Is this the best car? Does it even work?

- How do we manage services vs the system?
- It can be counter-intuitive, but...

The system makes as much of a difference as individual services



Integration



Key messages

1

Help more residents and help them **earlier**

2

Support **schools** to be at centre of their community and draw on community resources

3

Enable residents and their families to be **resilient** and **connected** to their community

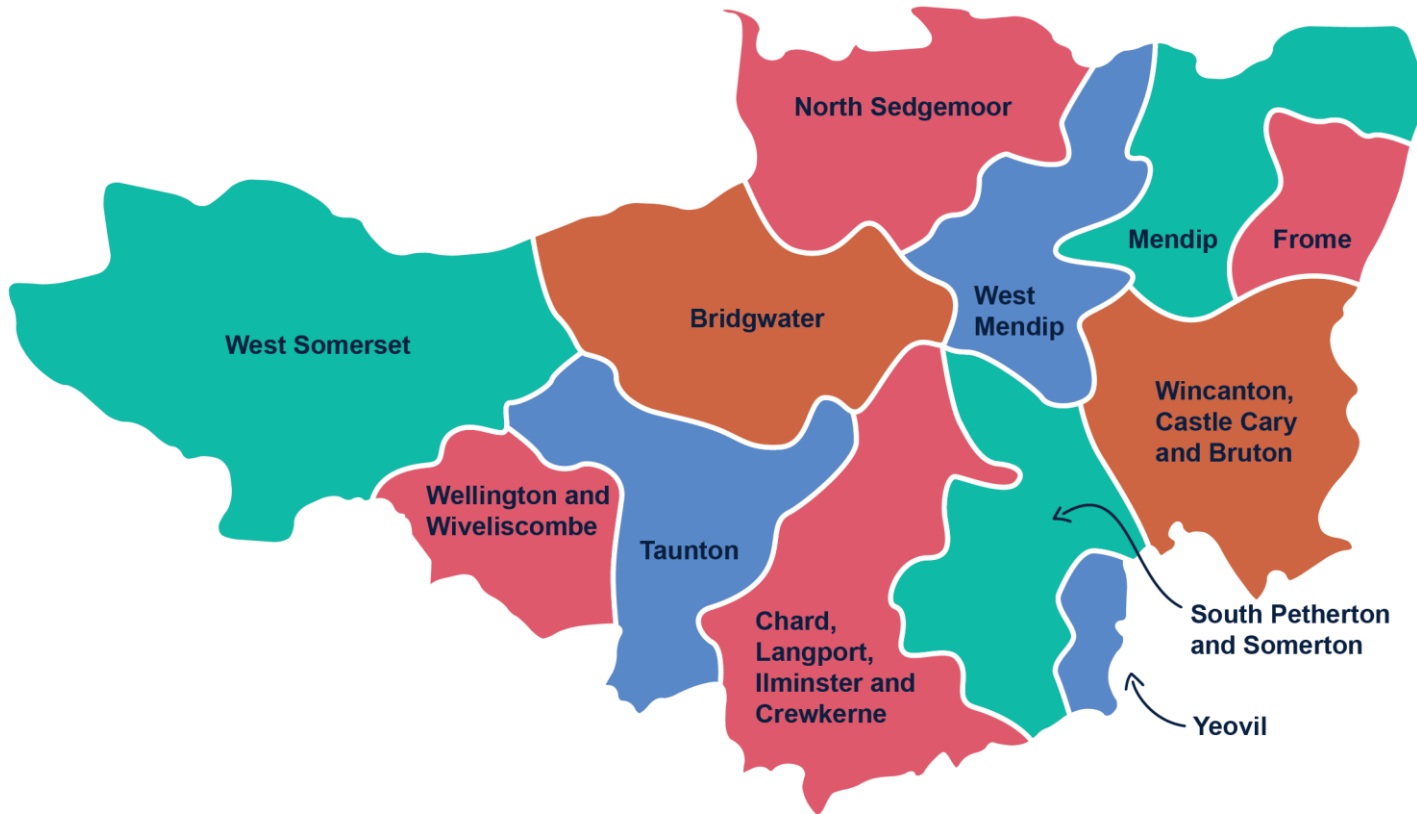
4

Integrate services and support, **closer to home**

5

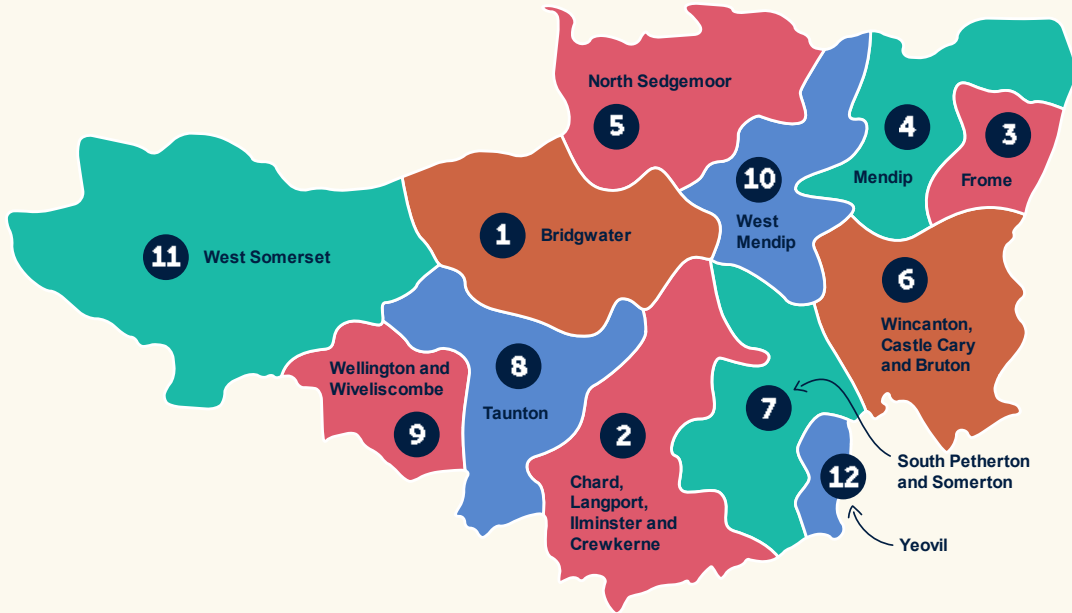
Improve residents' **lives**, reduce **inequality** and reduce **demand** for expensive acute services

Neighbourhoods



- Coterminous with Adult Services **Neighbourhoods**
- Working very closely with **Local Community Networks** and **School Clusters**
- Aligned with **Primary Care Networks**
- Best alignment with system to maximise integration and more effective support for families and residents

Find your Champion



1
Luke Jackson
 ✉ LJackson@sasp.co.uk
 ☎ 07458 301 528

2
Ingrid Edginton
 ✉ iedginton@holyrood.bep.ac
 ☎ 07852 303 637

3
Melody Hunter Evans
 ✉ mhunterevans@frometowncouncil.gov.uk
 ☎ 07894 238 603

4
Sharon Hale
 ✉ sharon.hale@sparksomerset.org.uk
 ☎ 07817 646 418

5
Doreen Smith
 ✉ DSmith@thespacesomerset.org.uk
 ☎ 07940 177 399

6
Sue Place
 ✉ Sueplace@balsamcentre.org.uk
 ☎ 07592 425 728

7
Alexander Priest
 ✉ alexander.priest@mindinsomerset.org.uk
 ☎ 07813 833 563

8
Andrew Pritchard
 ✉ andrew.pritchard@mindinsomerset.org.uk
 ☎ 07714 184 943

9
Pete Joint
 ✉ peter@wellingtontowncouncil.gov.uk
 ☎ 07824 373 978

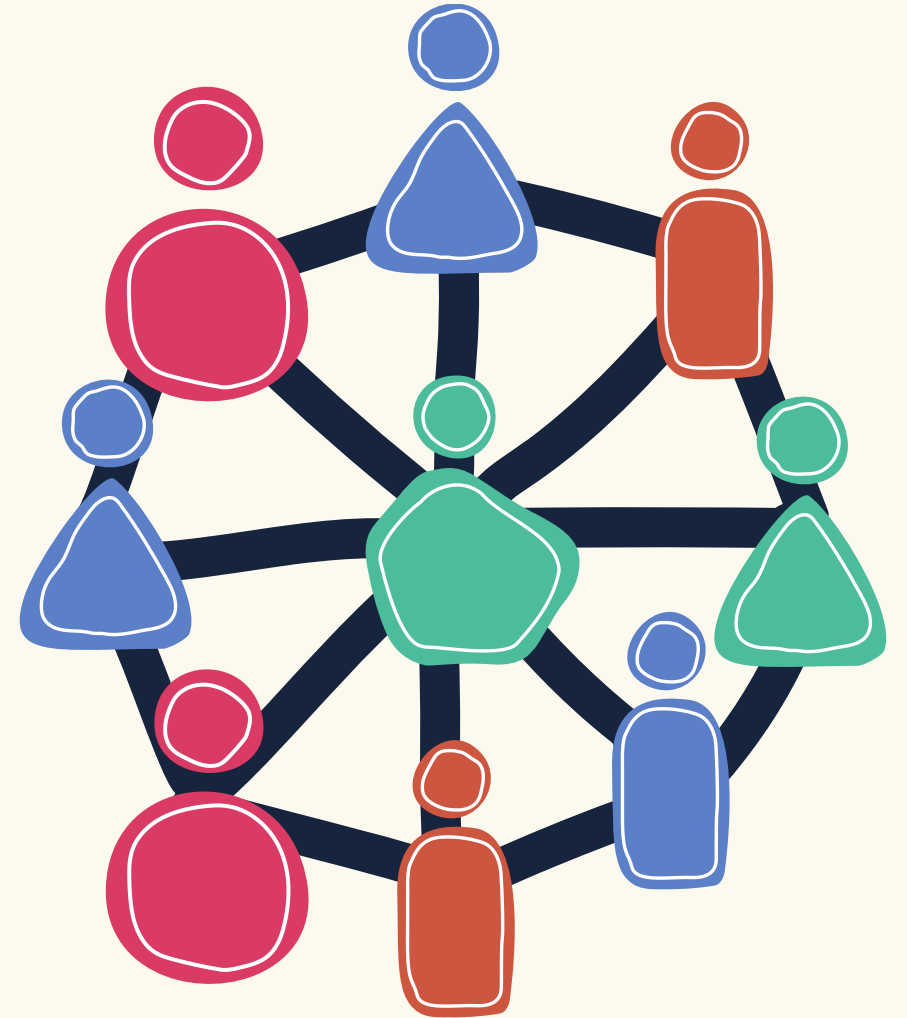
10
Siobhan White
 ✉ WestMendipChampion@ymca-bg.org
 ☎ 07562 414 858

11
Paul Matcham
 ✉ paulmatcham@minehead-eye.co.uk
 ☎ 07811 101 570

12
Natasha Rand
 ✉ natasha@yeovilartspace.uk
 ☎ 07774 883 489

Fantastic local hubs and resources

- 100 **Warm Welcome** hubs
- 273 **Schools** and **Colleges**
- **Community Hubs**, Talking Cafés, etc
- 18 **Local Community Networks**
- 13 **Primary Care Networks** and Adult Social Care **Neighbourhoods**
- 2760 registered **charities** with 10,300 **volunteers**
- **Parent, Family Support Advisers**, **Village agents**, **Community Agents**, **One Teams**
- **Health Connections**, Social Prescribing **Link Workers**, **Health Coaches**
- Public services in **schools** and **early years** settings, **GP surgeries**, **libraries**, **social care**, **hospitals** and **community** settings, **health visiting**, **police**, etc

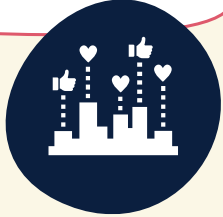


So what does Connect Somerset add?

1. Champion **capacity** to join up the public sector delivery, including schools, and connect to the voluntary, faith and community sectors, and lead local culture change
2. Build around **schools** as anchors of their communities and connect them to local resources
3. **Coordinate** and make most of local resources, services and hubs
4. **More early help**, drop-ins and support, especially where there are gaps in **rural areas**
5. Reduce **barriers** to working together – such as process, IT and data sharing
6. Bring together our databases of local resources – one place to **search**
7. **Integrate** health and care, children and adults, people and place where it makes sense
8. **Foundation** for more services to move to local delivery – closer to home



Connect to local community resources and Champions



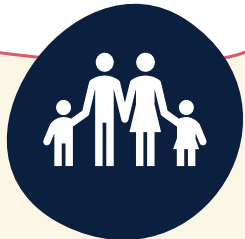
Named professionals linked to each school



Team Around the School



Wrap help around families as early as possible



Transform data sharing and contacts



Relational practice between professionals - don't wait for a meeting to call



#Help4All

- Easy to digest universal **offer of early help** that's available to all families
- Building **resilience** for families
- Includes support with cost-of-living crisis, #LearnForLove parenting support, Council and partners' advice and guidance
- **All professionals have conversations with families** about what's available to help, c.f. *Making Every Contact Count*

[ConnectSomerset.org.uk/Help4All](https://www.connectsomerset.org.uk/Help4All)

#Help4All 

Everyone is impacted by the cost-of-living rising which can put extra pressure on families. Somerset voluntary, community and public services are here to help. We've listed some of the most popular services and support that may be useful for you to know about.
www.connectsomerset.org.uk



Money - Contact **Citizens Advice** via email or use the daytime/evening Adviceline on **0800 278 7842** for advice on debt, energy costs, benefits. If you need immediate money for food or heating, you can access the **Somerset Household Support Fund**, professionals can help you with this, if required. You can find a nearby **warm welcome** space, or **food and activities** for eligible children at weekends. You can also seek help with **housing benefit**, **council tax reduction**, **claiming a discretionary award** and **public and community transport**. As well as support with **life long learning** and **finding and keeping a job**.

Food - Find your local food bank (you will have a professional). Children and young people under 16 and Food (you will have a professional). Children and young people under 4, you may be eligible for free school meals.

Home - If you are worried about your home, as you can, as we offer help. In an emergency you can call 0800 278 7842.

Mental health - Open Mind Somerset also be accessed through the Open Mind app. Support for people is available through the Open Mind app and the Tellmi app. For more information, guides and counselling, call 0800 278 7842 or visit **SASP**. You can also make a referral to the **SASP**.

Domestic abuse - If you or your family are affected by domestic abuse, you can get help from **Somerset Domestic Abuse Service** or call **0800 69 49 999** and choose option 2.

Drugs or alcohol - There is advice and support for young people, adults, and their family members if substance misuse is a problem. Contact **Somerset Drug & Alcohol Service** or phone **0300 303 8788** any time.

Parenting - Parents, carers and grandparents can **#LearnForLove** (access code: dragon) to support children from bump to teenager. **Young Somerset** also offer parent workshops and wider parent led work with mental health and early years.

Get free support and advice on:

- £
- Apple
- Home
- Brain
- Domestic abuse
- Drugs or alcohol
- Parenting

Key



Anchors in the community



Universal early help offer

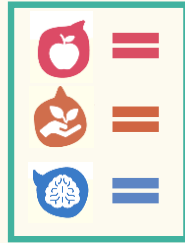


Professionals & Community in same Connect Somerset team



Connect Somerset

Early help in the community



#Help4All



Shared data
Case management
Community resources
Transform



Relational practice
Trauma informed
Whole family working
Safeguarding
Personalised care



12 Champions



Investment in communities



Identify who needs help



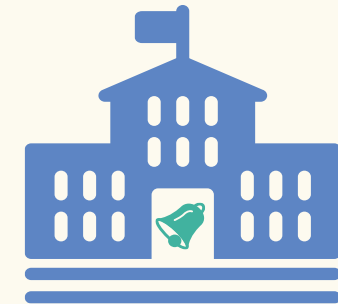
GPs

Social prescribing



100 Hubs

Drop-ins in rural areas e.g. SEND



Schools

Team around the School

Hubs

One Team

Warm Welcome

Community Café

Local Community Network

Workstreams



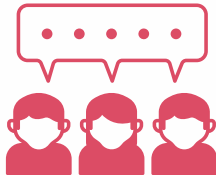
Team Around the School (TAS)



Universal early help offer



Automated early help



Comms to 20-30,000 professionals



Shared case management and tools



Investment in communities



Build neighbourhood teams

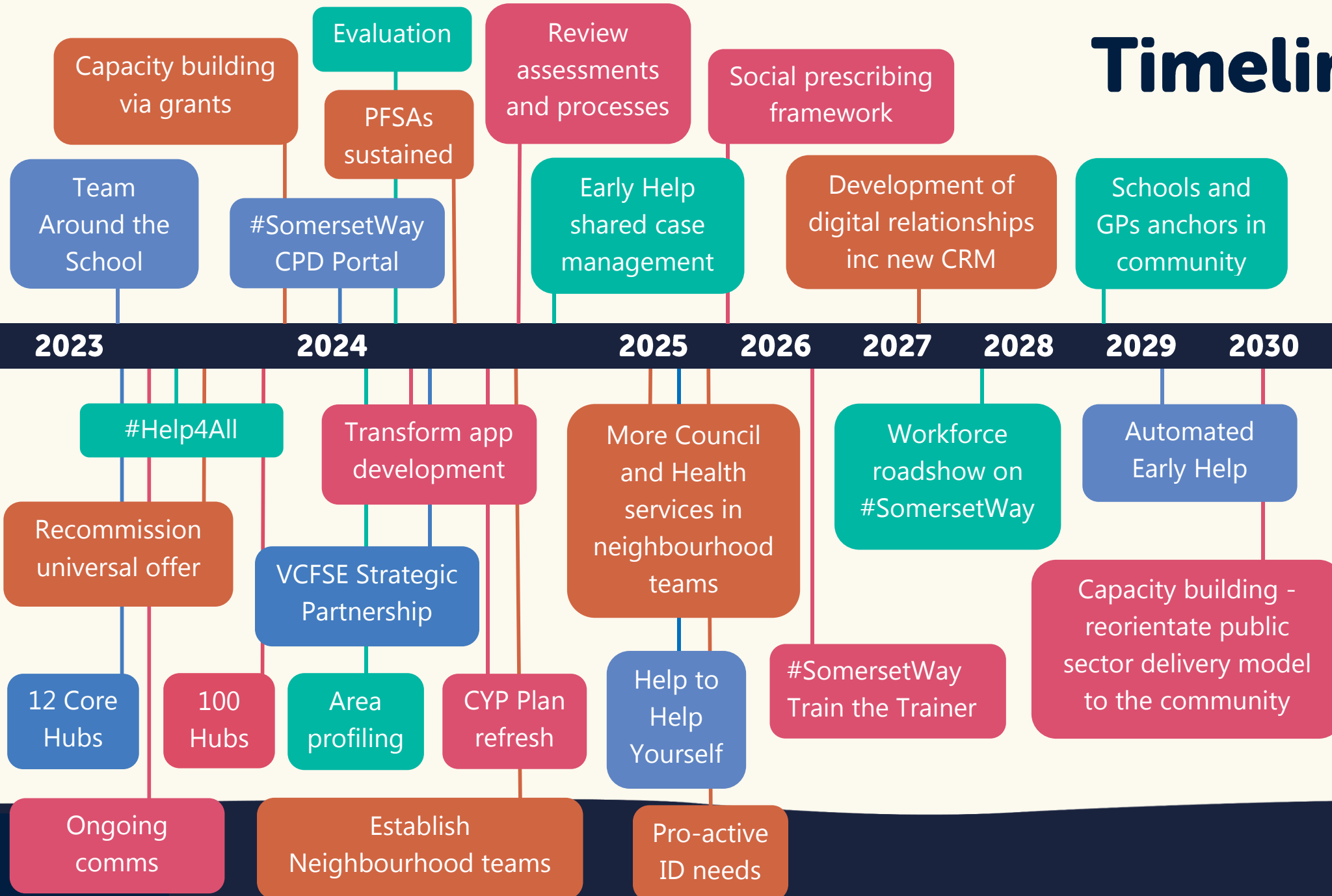


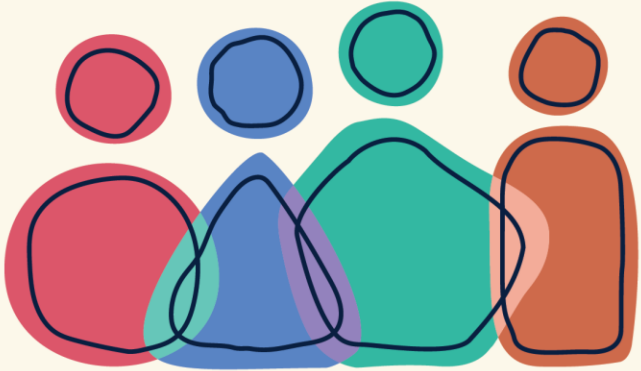
Evaluate impact



Workforce Development and culture

Timeline





**Connect
Somerset**