



Your Local Community Network

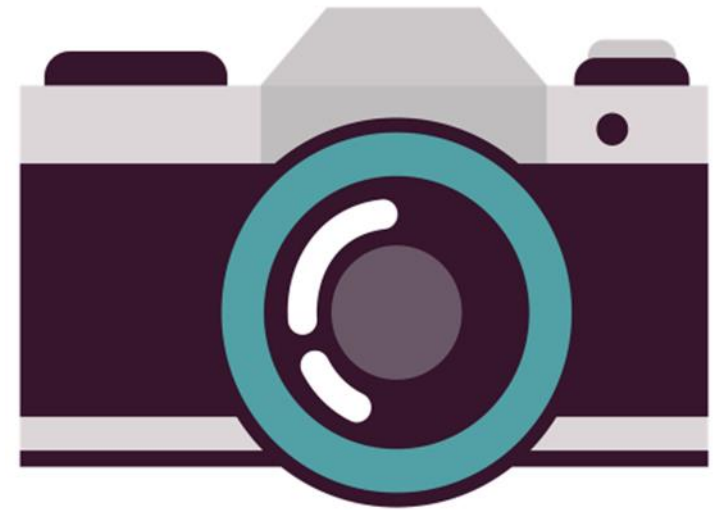
South East

Please Note

This event may be photographed for publicity purposes.

Images taken may be used by Somerset Council for marketing and promotional materials, including press releases, social media posts, and our website.

Please let a member of the Local Community Network Team know if you do not want your image to be used. **THANK YOU.**



Housekeeping

- If the fire alarm sounds leave the building immediately via the signposted exits.
- Please **turn off WiFi on all your devices and don't attend the online meeting if you're in the room**, so that people attending online can get the best possible meeting experience.
- Please put all your devices on silent.
- All information is captured during online discussion and forms part of the meeting notes.
- **When speaking, please hold a microphone and speak clearly into it. The microphones work automatically when you start speaking, indicated by a green light. You don't need to press anything!**
- Please raise your hand to alert the Chairs if you'd like to speak.

Agenda

1. Agree the notes of the Annual General Meeting
2. Update from working groups
3. LCN Questionnaire
4. Guest speakers:
 - Fodo Higginson, Community Health & Wellbeing Officer, Somerset Association of Local Councils (SALC)
 - Sue Place, CEO, The Balsam Centre, Wincanton
5. Table Talk
 - Reflection on Guest Speaker presentations
 - Making opportunities reality
6. Any other matters

Update from Working Groups



- **Flooding**
- **Footpaths**
- **Highways**
 - **The Enhanced Highways Maintenance Pilot**
 - **Volunteer Training**

LCN Questionnaire

Now our LCN's in its second year, we want your views again about what's important to you in our to make sure we focus on what matters most.

To complete the survey, please visit:

Somerset Council - Citizen Space – SE
Somerset LCN Survey

Survey closes Sat 30th November 2024



Guest Speaker

Fodo Higginson, Community Health & Wellbeing Officer, SALC



SALC is working with Somerset Council & partners, to help support Town and Parish Councils to deliver community health & wellbeing projects.

Health and Wellbeing is a broad area with many possibilities. Many factors can impact people's physical and mental health, and sense of wellbeing and belonging.

You know your community best, so your councils are best placed to deliver projects that address any inequality related to these factors.

Factors impacting physical/mental health, sense of wellbeing, and belonging



ENVIRONMENT & CLIMATE CHANGE

TRANSPORT

FINANCE

CULTURE & CREATIVITY

SOCIAL CONNECTIONS & FAMILIES

PHYSICAL ACTIVITY

EQUALITY & DIVERSITY

EMPLOYMENT, EDUCATION & TRAINING

HEALTH & COMMUNITY SERVICES

HOUSING & INFRASTRUCTURE

FOOD & NUTRITION

Next steps



Engage: If needed, we can help you to communicate with residents and identify community needs.

Collaborate: Actively work with your local groups and charities to develop innovative projects.

Partner: Connect with other Councils, LCN, and county providers to develop wider projects.

Apply for Grants: Explore available funding options:

- **£1,500** Seed Grants for initial project ideas.
- **£2,500** Small Grants for smaller or individual council projects.
- **£35,000** Large Grants for collaborative projects involving multiple councils.

Plan for the Future: Consider long-term sustainability when designing projects to ensure lasting impact.

Start a Conversation: Contact Fodo Higginson, Community Health & Wellbeing Officer, for support and guidance.

Guest Speaker

Sue Place, CEO, The Balsam Centre



Our mission

To provide community-based, participatory, purposeful and life-changing activities in a supportive and safe environment which improve people's well-being.

Our vision

For people to live healthy and happy lives.

Table Talk

Reflection on Guest Speaker Presentations
Making opportunities reality

- What are the most pressing health and wellbeing challenges faced by our local community network?
- Which Health & Wellbeing headings do these challenges relate to?
- Are there any gaps in services that, if addressed, would benefit our community greatly?
- What are our ideas to address these gaps at grass-roots level?

EACH TABLE TO PITCH A PROJECT IDEA

Consider 5WH

Who? What? When? Where? How? Why?

ENVIRONMENT &
CLIMATE CHANGE
TRANSPORT
FINANCE
CULTURE & CREATI
VITY
SOCIAL CONNECTIONS &
FAMILIES
PHYSICAL ACTIVITY
EQUALITY & DIVERSITY
EMPLOYMENT,
EDUCATION & TRAINING
HEALTH & COMMUNITY
SERVICES
HOUSING &
INFRASTRUCTURE
FOOD & NUTRITION

Any Other Matters?



Somerset
Council