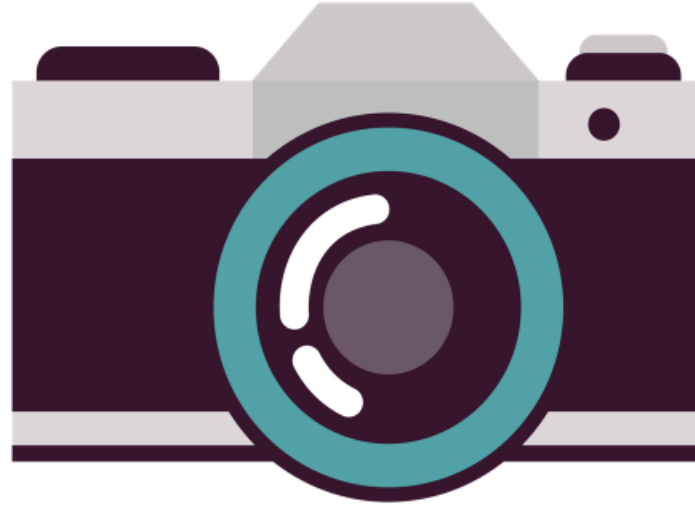


Please Note



This event is being photographed for publicity purposes.

Images taken at this venue may be used by Somerset Council staff for promotional materials, including our website, press releases and social media posts.

If you do not want your image used, please let a member of the Local Community Network Team know. **Thank you.**

House Keeping

- If the fire alarm sounds leave the building immediately- fire exists clearly signposted
- Could everyone turn your mobile's WiFi off to ensure those online get the best experience possible.
- All information is captured during online discussion and forms part of the notes.
- Please put your phone on silent.
- **When speaking please hold one of the microphones and speak clearly into it. They will work automatically when you start speaking, indicated with a green light.**
- Please raise your hand to alert the chair you'd like to speak



Your Local Community Network

Crewkerne and
Ilminster LCN

Agenda

1. Elect the Chair of the Local Community Network
2. Appoint the Vice-Chair of the Local Community Network
3. Presentation from Wessex Internet
4. Presentation from Fodo regarding Community Health and Wellbeing and SALC support grants.
5. Discussion about Health and Wellbeing in our LCN
6. Dates for Future LCN meetings

Elect Chair of Crewkerne and Ilminster LCN

Elect Vice-Chair of Crewkerne and Ilminster LCN



Local Community Network Presentation

Ilminster and Crewkerne

22 October 2024



A little bit about Wessex Internet



Wessex Internet was
**founded in
2010
in Dorset**



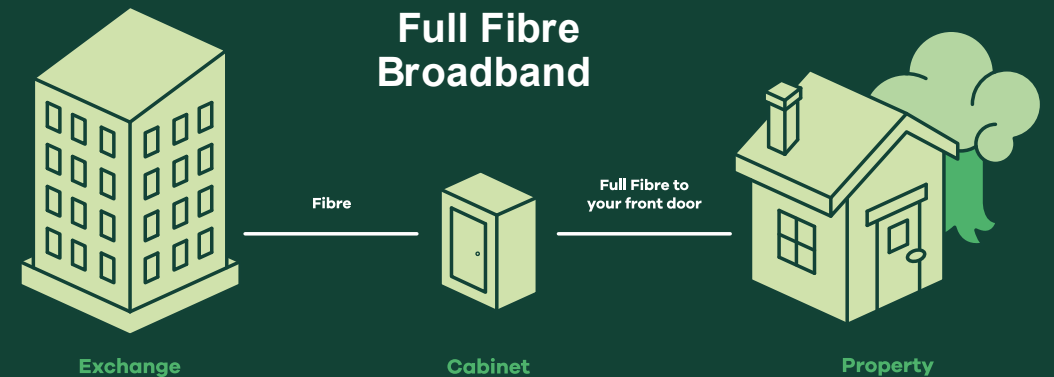
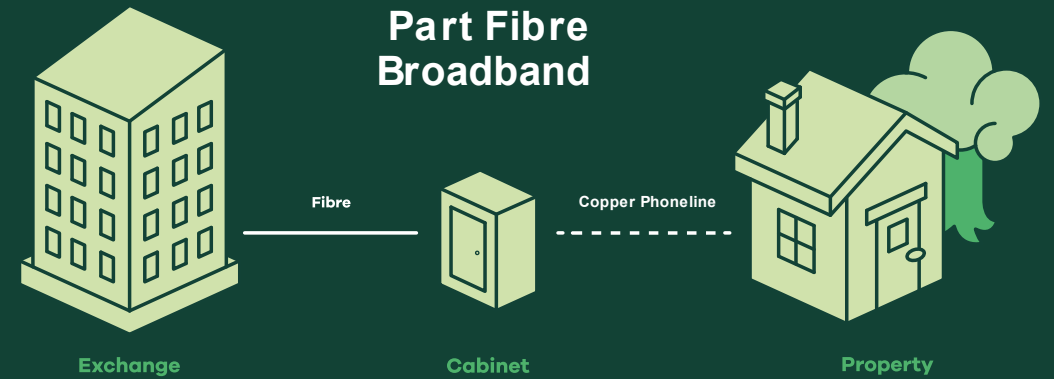
Wessex Internet now has
**9,000
broadband
customers**



We have been awarded
**Best
customer
experience** *

What is full fibre?

Full fibre broadband delivers ultrafast connectivity direct to your property. Connect to the internet without any lagging, watch high-definition media and have multiple devices on the go at the same time.



Why full fibre?

True Full fibre to the Property (FTTP) from Wessex Internet can deliver speeds from 100 to 900Mbps. This allows you to enjoy the internet without compromise or frustrations and futureproofs your connection for future generations.

Enjoy
download
speeds up to

900
Mbps



Copper switch off

The copper switch off is scheduled for 2027. Copper connections often slow down during busy periods and full fibre connectivity is much more reliable than copper.





Connecting Devon & Somerset (CDS)

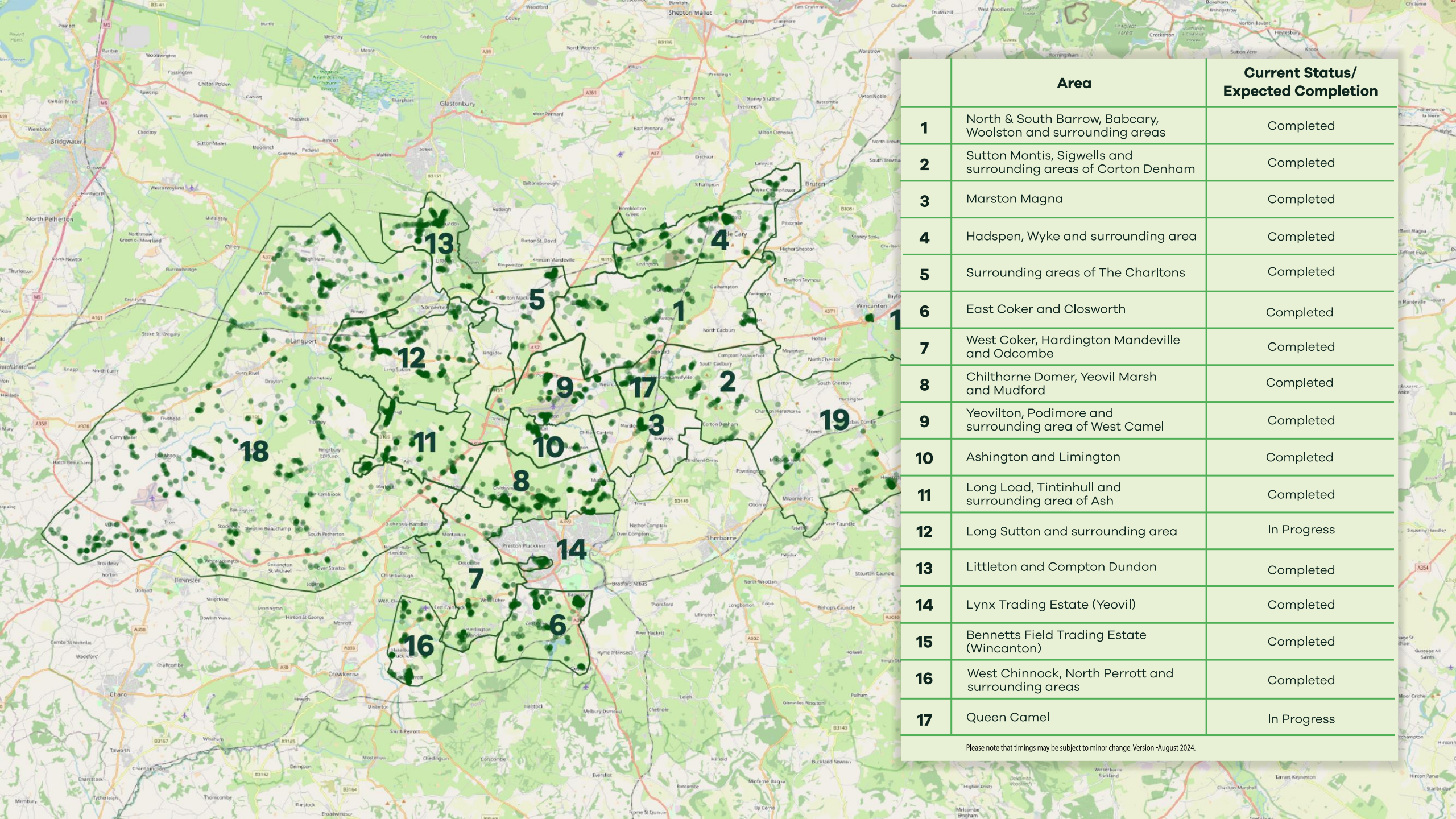
We have been contracted by **Connecting Devon and Somerset (CDS)** to deliver ultrafast full fibre broadband to homes and businesses in rural areas of South Somerset.



We are bringing our full fibre network to **more than 4,700 properties** in some of the district's most rural areas.

Over the next three years, we will be building our network to a number of hamlets and villages across **South Somerset**.





	Area	Current Status/ Expected Completion
1	North & South Barrow, Babcarly, Woolston and surrounding areas	Completed
2	Sutton Montis, Sigwells and surrounding areas of Corton Denham	Completed
3	Marston Magna	Completed
4	Hadspen, Wyke and surrounding area	Completed
5	Surrounding areas of The Charltons	Completed
6	East Coker and Closworth	Completed
7	West Coker, Hardington Mandeville and Odcombe	Completed
8	Chilthorne Domer, Yeovil Marsh and Mudford	Completed
9	Yeovilton, Podimore and surrounding area of West Camel	Completed
10	Ashington and Limington	Completed
11	Long Load, Tintinhull and surrounding area of Ash	Completed
12	Long Sutton and surrounding area	In Progress
13	Littleton and Compton Dundon	Completed
14	Lynx Trading Estate (Yeovil)	Completed
15	Bennetts Field Trading Estate (Wincanton)	Completed
16	West Chinnock, North Perrott and surrounding areas	Completed
17	Queen Camel	In Progress

Please note that timings may be subject to minor change. Version -August 2024.



Project Gigabit



Funded by
UK Government





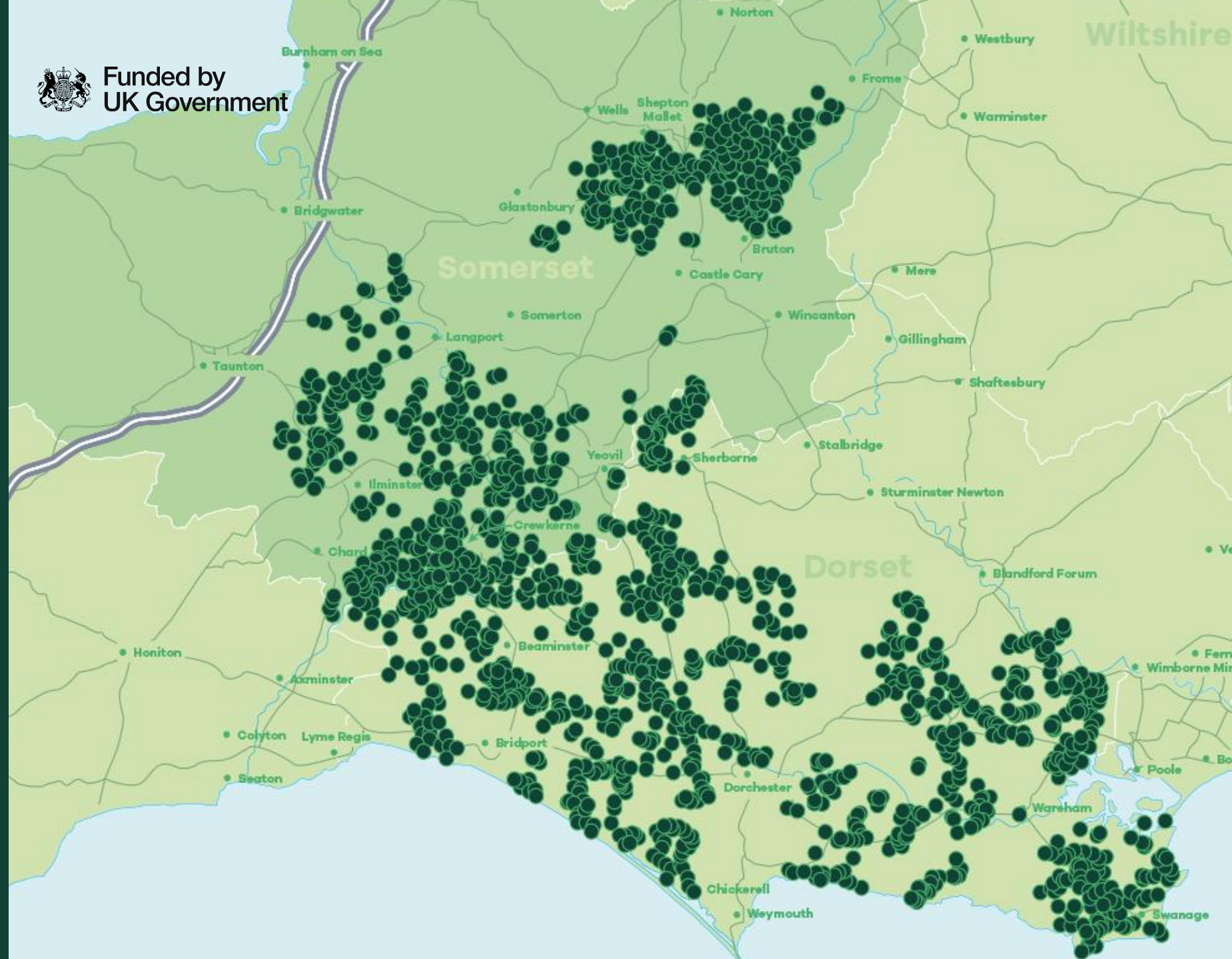
 Funded by
UK Government

Project Gigabit Dorset & South Somerset

21,400

homes & businesses

2024-29





How will we
get to you?

01

Rural routes to
your community





02

Underground
ducts

Working with landowners



and parish councils





For further information

Ben Heath

Regional Community Manager

ben.heath@wessexinternet.com

wessexinternet.com



**Wessex
Internet**



SALC are working with Somerset Council, and other partners, to help support Somerset's city, town and parish Councils to actively engage in and deliver, Community Health & Wellbeing projects locally.

HEALTH & WELLBEING



Health – “physical, mental and social well-being” (WHO)



Wellbeing – is harder to define, but can be based on a whole set of social, health, economic and emotional factors



Equality then factors into delivery of any projects to improve Health & Wellbeing

As individuals we participate in activities that keep us physically fit, help us relax or bring joy and laughter into our lives.

The ways in which we do that are as diverse as the people we are and our interests change as we move through life.

Just take a few minutes to think of all the activities that help you with your health & wellbeing...

...and what might prevent you from participating?



Factors that might impact health & wellbeing

Culture & Creativity

Employment, Education & Training

Environment & Climate Change

Equality & Diversity

Finance

Food & Nutrition

Health & Community Services

Housing & Infrastructure

Physical Activity

Social Connections & Families

Transport



As councils and you no doubt support or deliver many community health & wellbeing projects.

Please think about some of the ways in which you've delivered support.

Has that support been **Reactive OR Proactive**

Reactive

- Taking over services dropped by other authorities
- Giving grants to local organisations who apply
- Taking action following information from residents

OR

Proactive

- Carrying out a Community Plan or Review
- Creating a Strategic Plan
- Working with and/or offering grants to local organisations who deliver services highlighted by review
- Looking at innovative ways to develop new services or deliver existing ones

A Community Health & Wellbeing project might involve:

- Bringing people together to share food and be sociable.
- Support or activities for young people or older people.
- Tackling transport issues in a rural parish.
- Helping establish a walking or cycling group.
- Bringing in experts for financial or other advice
- Setting up art, drama or music groups

This is also about collaboration - you don't need to reinvent the wheel. Everywhere there are local groups, charities and voluntary organisations.

We can help you work together to come up with innovative projects to improve people's lives.

We are hoping to encourage long lasting projects. We understand this will mean a financial commitment from your council so to help kick start ideas we have grants available:

Seed Grants to scope out ideas – **up to £1500**

Small Grants for smaller projects or smaller councils - **up to £2500**

Large Grants for larger projects, maybe a group of Councils working together - **up to £35,000**

**This Community Health & Wellbeing programme is about us helping
you to support your communities to live happier healthier lives**

To discuss your ideas contact:

Fodo Higginson

Community Health & Wellbeing Officer

Somerset Association of Local Councils

HWBSupport@somerset-alc.org.uk

Mb: 07932265419

Website

<https://somerset-alc.org.uk/health-wellbeing/>



Table Discussion on Health and Wellbeing

Health and Wellbeing in your Parish

Purpose: to compile a picture of activities across the LCN

- What facilities/groups/activities are available in the parish?
- What are the 3 main challenges they face?
- How can the wider LCN help with each of these challenges?

Active Travel Working Group Update

FOLLOWING THE RECENT ACTIVE TRAVEL WORKING GROUP MEETING, THE MAINTENANCE OF LOCAL FOOTPATHS WAS RAISED.

PLEASE EMAIL YOUR RESPONSES TO THE FOLLOWING TO crewkerneandilminsterlcn@somerset.gov.uk by 14 Oct 24

1. What kind of lanes man service do you currently have in your parish?
2. How is this organised and paid for?
3. What are the main "WINS" for residents?
4. What are the main challenges?
5. How can this service become LCN wide?

Dates for future Meetings

Monday 9th December 2024

Wednesday 19th March 2025

Wednesday 11th June 2025