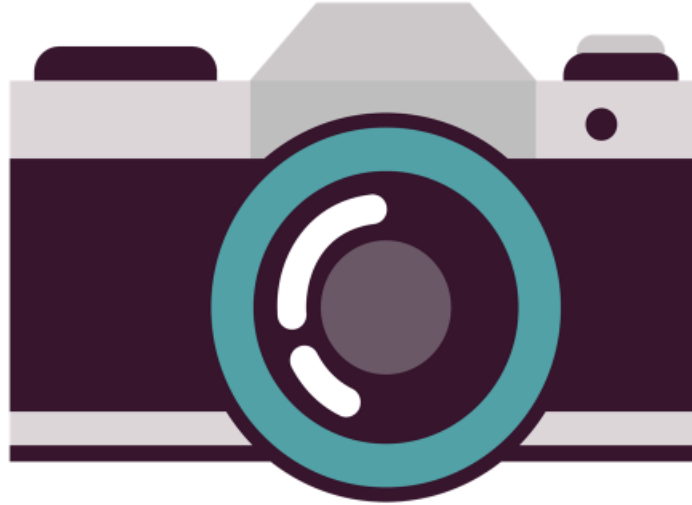


Please Note



This event is being photographed for publicity purposes.

Images taken at this venue may be used by Somerset Council staff for promotional materials, including our website, press releases and social media posts.

If you do not want your image used, please let a member of the Local Community Network Team know. **Thank you.**

House Keeping

- If the fire alarm sounds leave the building immediately- fire exists clearly signposted
- Could everyone turn your mobile's WiFi off to ensure those online get the best experience possible.
- All information is captured during online discussion and forms part of the notes.
- Please put your phone on silent.
- **When speaking please hold one of the microphones and speak clearly into it. They will work automatically when you start speaking, indicated with a green light.**
- Please raise your hand to alert the chair you'd like to speak



Your Local Community Network

**Cheddar and
Axbridge LCN**

Agenda

1. Introduction (including any apologies for absence)
2. Agree notes and annual report from last meeting
3. Update from Highways working group
4. Climate change Discussions:
 - A. Community Environment Toolkit: Cllr Dixie Darch
 - B. Tree Planting: Craig Dater, Woodland Creation Officer, Somerset Council
 - C. Local Nature Recovery Strategy: Steve Dury, Somerset Council
5. Update on access to services discussion
6. . Agree theme and discussion of next meeting (12th December 2024)

Highways Working Group

Community Environment Toolkit

Cllr Dixie Darch and James Divall

Tree Planting

Craig Daters

Tree Strategy Delivery Community Projects

**Craig Daters
Woodland Creation Officer**



**Somerset
Council**

A reminder of what we're trying to achieve (over the next ten years!)

1. Create a wood culture
2. Ensure trees and woodland are resilient and adaptable
3. Expand tree, woodland and canopy cover
4. Create wood services and products
5. Create a sustainable and flexible governance



Current Work Streams

Its not just about getting 'trees in the ground'!

- **Community action**
 - Creation of Information Hub
 - Support Schools and Community groups to plant trees
- **Growing our own**
 - Support and enable development of community tree nurseries
- **Getting trees in the ground**
 - Creating and developing ideas and opportunities within Somerset Council
 - Working with private landowners
- **Building capacity**
 - Collaborating with partner organisations
 - Develop Somerset Tree Planting Register
- **Unlocking funding**
 - Utilise national and local funding opportunities as well as private financing



We need you help...

To promote and directly support

- FREE trees for schools and community groups
- Somerset Tree Planting Register



Somerset Council

FREE trees for schools and community groups

Somerset Council and the Woodland Trust can help and support tree and hedgerow planting within school grounds and open green spaces across the county.

Tree Planting has many benefits:

- For people,
- For nature,
- For the climate.

It's easy to do and a great way to take positive action and learn about our natural world.

Planning to plant trees and need FREE expert advice? Contact our Woodland Creation team at woodlandcreation@somerset.gov.uk

To apply for FREE trees visit:
www.woodlandtrust.org.uk/plant-trees/schools-and-communities

WOODLAND TRUST, Environment Agency, Naturally Somerset, EXMOOR NATIONAL PARK, Forestry Commission

Whitehall Primary School Planting, DEFRA 11th of December 2019. Photo by Richard Faulks



Somerset Council

Root for Somerset Make your trees count

Are you an amazing Somerset resident, group, landowner, school or business doing great work to plant trees? Celebrate your efforts and make your tree planting count.

Can we count on you?

Register them on the Somerset Tree Planting register.
It's easy to do and takes less than five minutes.

The Somerset Tree Planting Register is part of the Somerset Tree Strategy - a 10 year plan to enhance and protect Somerset trees and woodland.

Planning to plant trees and need FREE expert advice? Contact our Woodland Creation team at woodlandcreation@somerset.gov.uk

Find out more at www.somerset.gov.uk/somerset-tree-strategy

Environment Agency, Naturally Somerset, EXMOOR NATIONAL PARK, Forestry Commission, WOODLAND TRUST

FREE trees for schools and community groups

- In collaboration with the **Woodland Trust**
- Provide support to plan and plant whips to grow into small woodlands or hedgerows
- Woodland Trust provide the whips and we provide the guidance and support
- Open to all schools and any group who wish to plant on publicly accessible land



Somerset Tree Planting Register

- One single quantifiable metric within the Somerset Tree Strategy – to plant **240ha. new woodland every year for ten years**
- We know trees are being planted by many small, medium and large groups, organisations and companies but **we do not know how many, where and why**
- The Register aims to collate this unique data to help inform and guide future plans, schemes and effort
- ‘Self-service’ questionnaire open to all



The poster features a green background with a map of Somerset in orange, dotted with small tree icons. A yellow location pin with a leaf icon is placed over the map. The text is in white and yellow. At the bottom, there is a row of logos for Somerset Council, Environment Agency, Naturally Somerset, Exmoor National Park, Somerset National Landscape, Forestry Commission, and Woodland Trust.

Somerset Council

Root for Somerset

Make your trees count

Can we count on you?
Register them on the Somerset Tree Planting register. It's easy to do and takes less than five minutes.

Find out more at www.somerset.gov.uk/tree-strategy

Environment Agency **Naturally Somerset** **EXMOOR NATIONAL PARK** **Somerset National Landscape** **Forestry Commission** **WOODLAND TRUST**

Scheme details and contacts

Craig Daters and James Chapman – Somerset Council Woodland Creation Team

woodlandcreation@somerset.gov.uk

[Somerset Tree Strategy](#)

[Free Trees for Schools and Communities - Woodland Trust](#)

[Somerset Tree Planting Register - Somerset Council - Citizen Space](#)





Somerset
Council

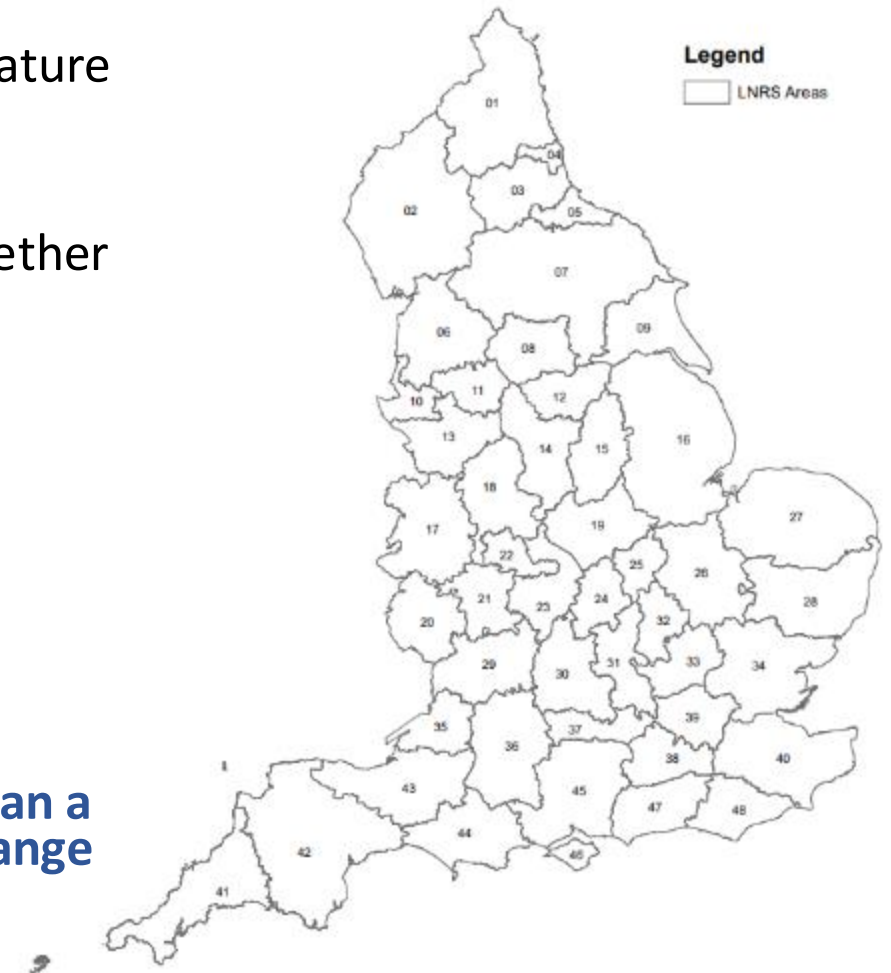


Somerset Local Nature Recovery Strategy

Steve Dury (Somerset Council)

What is a Local Nature Recovery Strategy and why do we need it?

- A Local Nature Recovery Strategy (LNRS) is a spatial strategy for nature and environmental improvement
 - They are a legal requirement of the Environment Act 2021
 - 48 strategies are in preparation across England and will stitch together at the boundaries to create England's Nature Recovery Network
 - Strategies will be refreshed every 3-10 years
-
- ❖ **1 in 6 species in the UK at risk of extinction (inc. 43% of birds)**
 - ❖ **2023 was the world's warmest year on record (NOAA, 2024)**
 - ❖ **Annual damage caused by flooding could increase by more than a fifth in today's terms over the next century due to climate change (BBC, 2023)**





Somerset
Council

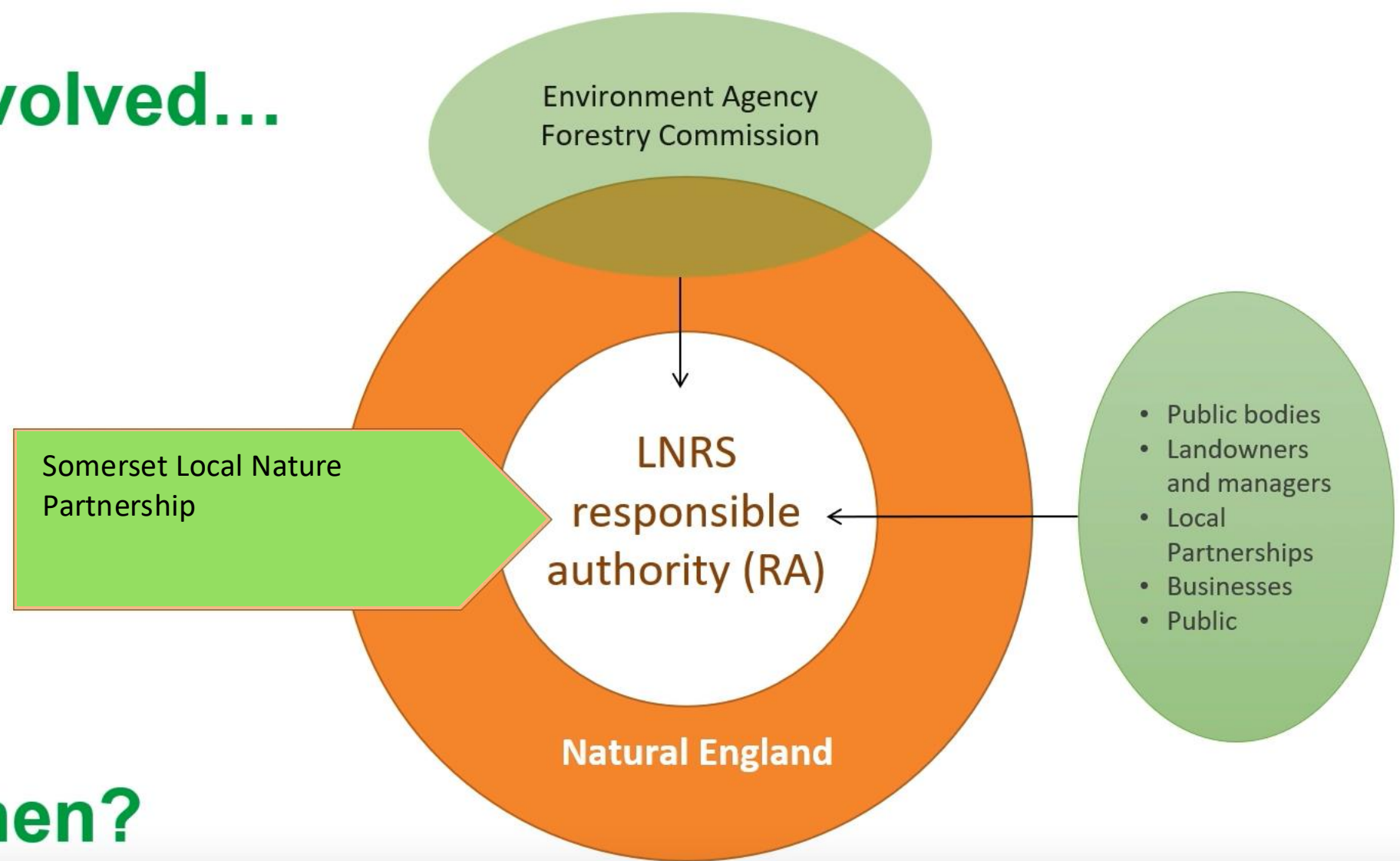
Somerset Council appointed as the Responsible Authority.

Work being led by Somerset Council under the umbrella of the Somerset Local Nature Partnership to ensure a collaborative approach.

- Work with key partners to **identify priorities & actions for species and habitats**
- Identify priorities for restoring nature to meet **socio/economic needs** (flooding, water quality, health etc)
- **involve delivery partners** (farmers, community groups, developers, forestry, health sector etc)



Who's involved...



...And when?

- ▶ Preparation underway
- ▶ Public consultation Dec 2024 or Jan 2025
- ▶ Publish Somerset LNRs by March 2025





Local Nature Recovery Strategy

Local people working together to:

- **Map** important nature areas
- **Describe** nature in Somerset and opportunities for recovery
- Set Nature Recovery **Priorities**
- Propose **activities** to recover nature
- **Map** high opportunity nature areas

Objective for the LNRS is...

More, better quality habitat in the places where this will make the biggest contribution to nature recovery...



...and deliver other environmental benefits in the process.

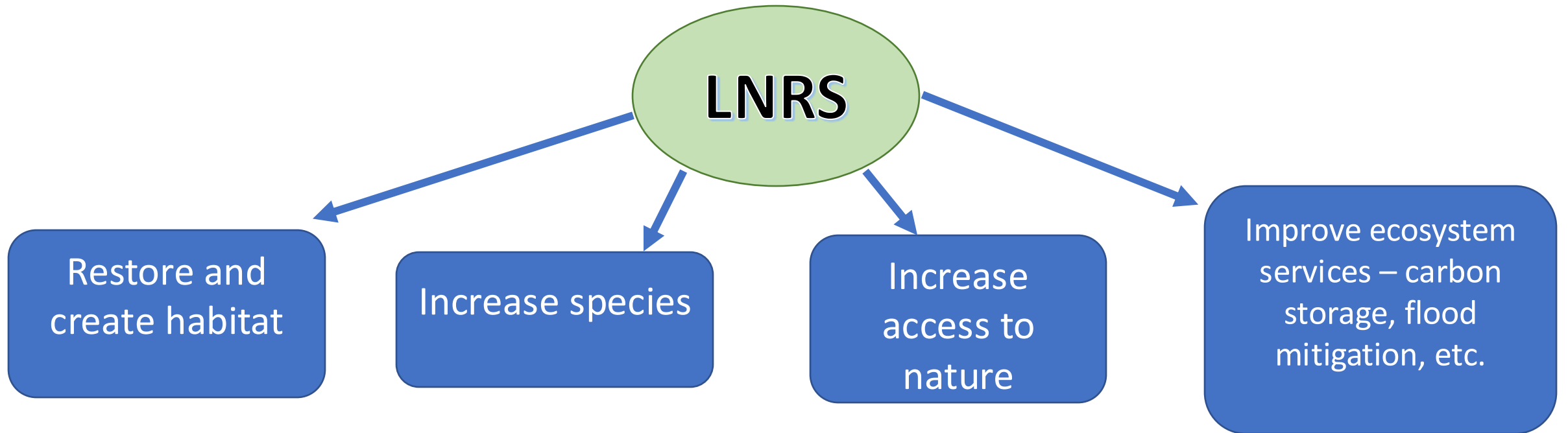
LNRS can target the use of nature-based solutions where they will have the most benefit



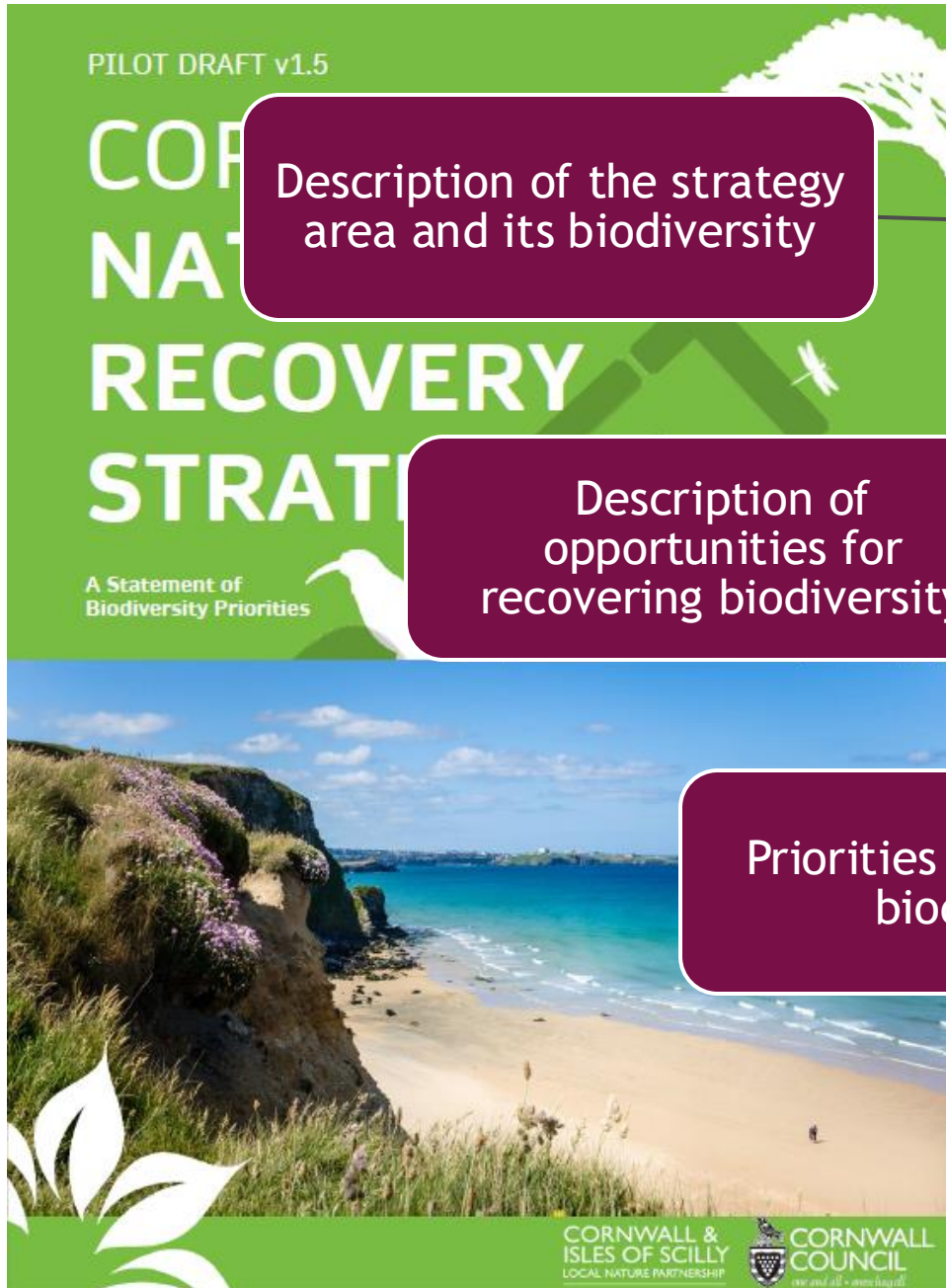
But it's also about...



What will the LNRS achieve and how?



...by working with local communities, landowners and managers, farmers, land-use planners, businesses, and local authorities at every step of the preparation.



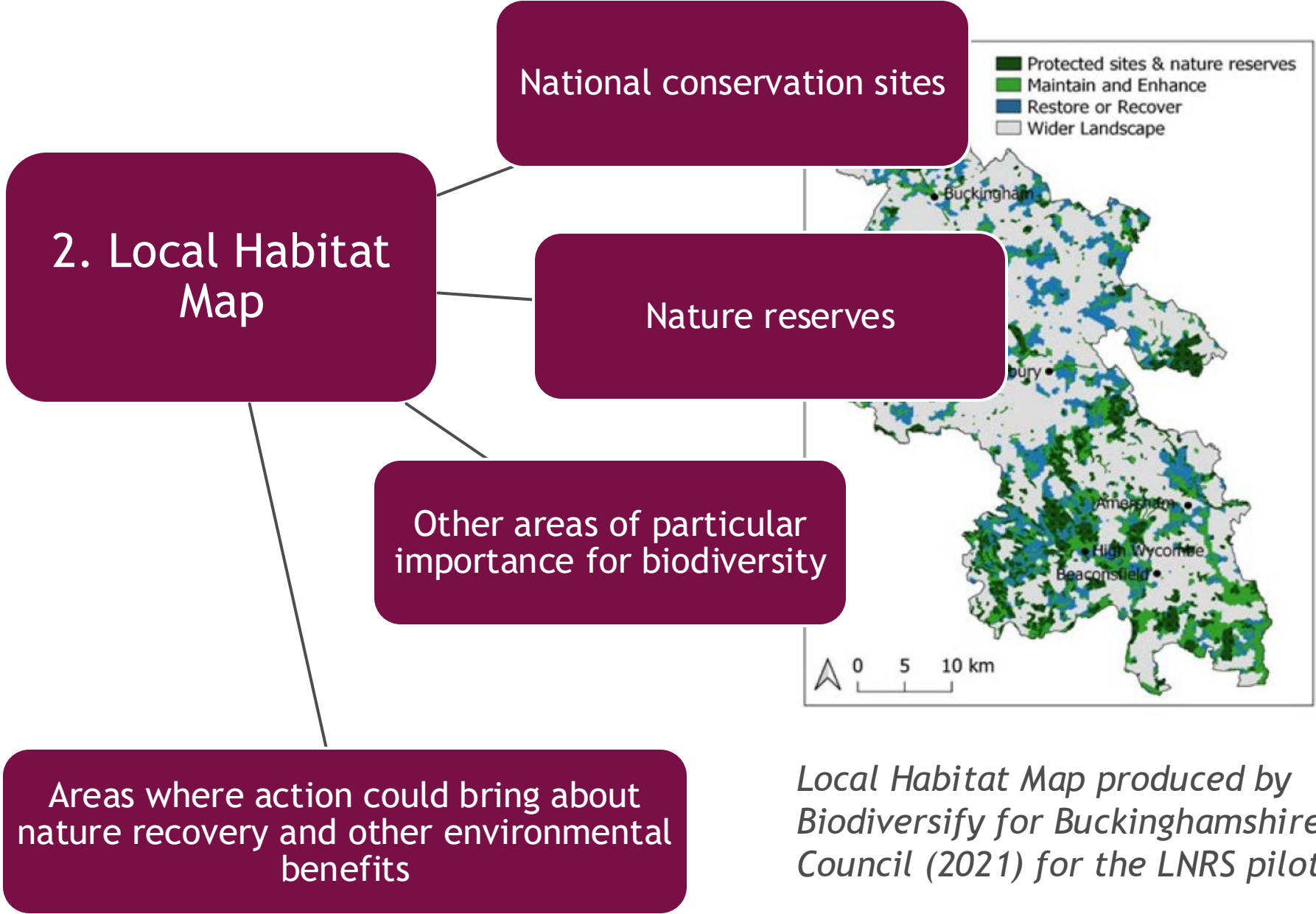
Description of the strategy area and its biodiversity

Description of opportunities for recovering biodiversity

Priorities for recovering biodiversity

Measures relating to those priorities

1. Statement of biodiversity priorities



Local Habitat Map produced by Biodiversify for Buckinghamshire Council (2021) for the LNRS pilot

What could an LNRS look like?

CORNWALL NATURE RECOVERY STRATEGY

OUR PRIORITY MEASURES & OUTCOMES

For the next five years the following will be our collective priorities. We have distinguished two measures for each priority: to **Enhance & Protect** existing high-value habitats in Zone 1; and to **Create & Restore** in priority opportunity areas in Zone 2, towards extending, defragmenting and connecting the network with corridors. (The method for prioritisation and zoning is described in Appendix 1.)

SHORT-TERM PRIORITIES:
WE WILL ENHANCE, PROTECT, CREATE & RESTORE...

WETLAND AND NATURALISED WATERCOURSES
A dynamic, healthy and more connected wetlands, floodplains, ponds & watercourses are naturally functioning, whilst supporting diverse species, flood resilient communities, and fulfilling their blue carbon potential – especially peatland.

WOODLAND AND ANCIENT WOODLAND
An increase in woodland cover which is well managed, more connected and linked by resilient corridors with the right tree in the right place, protected ancient sites, and all woodland types supporting a diverse community of species.

CORNISH HEDGES & EDGES
A wider, wilder and more joined up network of Cornish hedges and edges with enhanced canopy cover and uncultivated margins that is supporting diverse species to feed, breed and move.

HIGHER NATURE VALUE FARMLAND & WILDLIFE-RICH GRASSLAND
Less intensive, regenerative practices are enhancing habitats for increased biodiversity, climate resilience, and sustainable food production – including on non-marginal land. Wider and wilder margins are established, connecting wildflower-rich grasslands and pollen & seed-rich crops in a mosaic with other semi-natural habitats like scrub.

OUR COASTAL FRINGE
A continuous, buffered, nature-rich coastal corridor that joins up the coast to establish a climate resilient and adaptive coastal fringe of dynamic dunes, natural wetlands, and species-rich cliff-tops, slopes and intertidal habitats.

SOILS
Our soils are protected from erosion, compaction and loss by careful management and efficient use of crops and inputs – capturing and storing carbon, efficiently cleaning the air and water, and harbouring diverse fungi, bacteria & invertebrates.

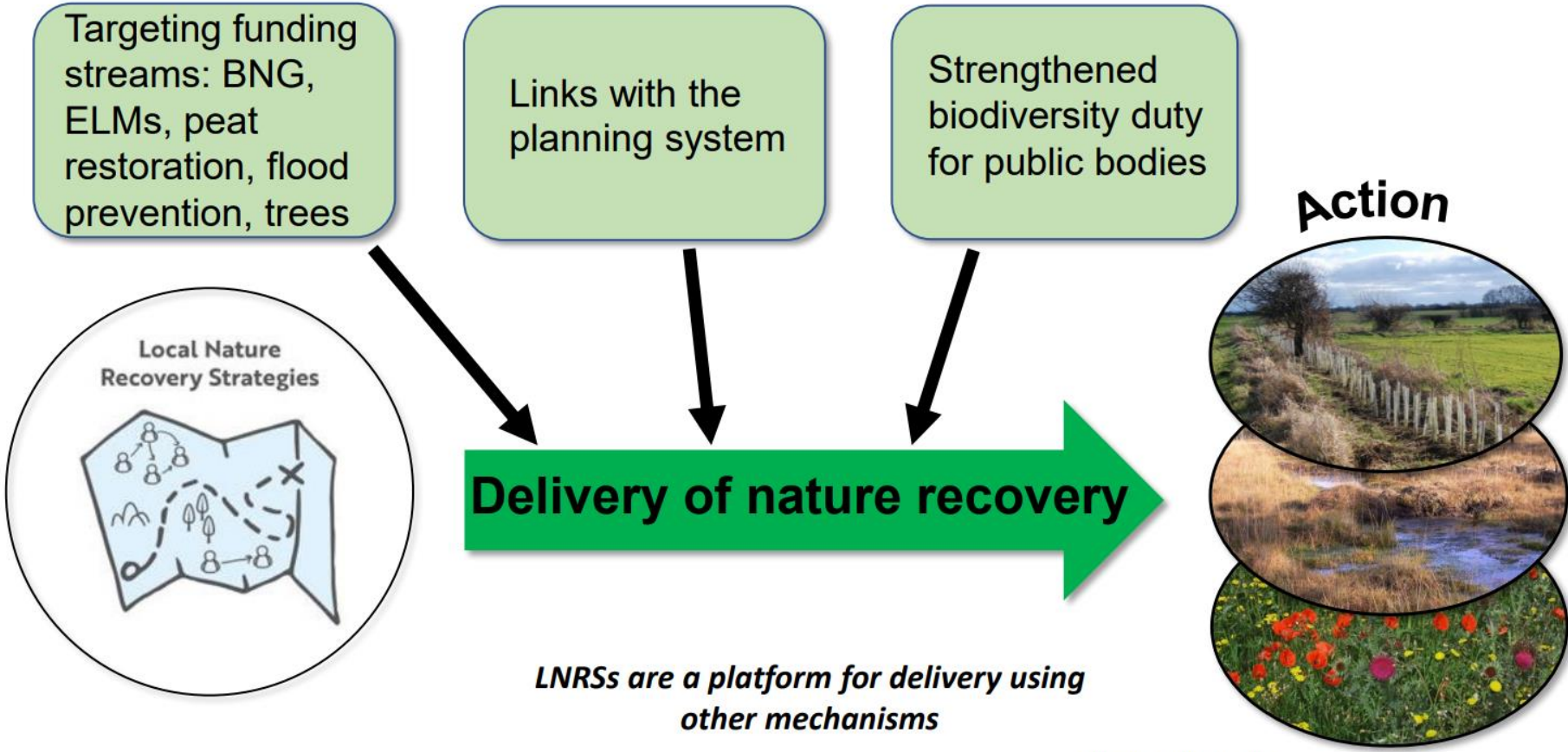
57



Images: Cornwall LNRS Pilot

NB: This pilot output was undertaken prior to regs and guidance being released so may not reflect current output requirements

How will the LNRS be used?



Images: Natural England

Indicative timeline



Somerset's Local Nature Recovery Strategy

Somerset Local Nature Recovery Strategy will set local priorities and identify opportunities for co-ordinated action to help nature thrive

[← Back to Planning, buildings and land](#)

Contents

Somerset Local Nature Recovery Strategy will set local priorities and identify opportunities for co-ordinated action to help nature thrive

- [About](#)
- [Local Nature Recovery Strategy survey](#)
- [Help spread the word](#)
- [Why do we need a Local Nature Recovery Strategy \(LNRS\)?](#)
- [What will be included in Somerset's Local Nature Recovery Strategy?](#)
- [How will Somerset's LNRS be used?](#)
- [Who is responsible for Somerset's LNRS?](#)
- [When will the Somerset LNRS be produced?](#)
- [Get involved - Help shape Somerset's Local Nature Recovery Strategy](#)

About

We are currently working on a Local Nature Recovery Strategy (LNRS) for Somerset to provide a single vision for nature recovery and set out our local priorities and opportunities for nature.

Anyone can have a part to play in shaping this strategy and we very much encourage you to [get involved](#).



Lead Member for Environment and Climate Change, Councillor Dixie Darch, recently spoke to Steve Haigh at Radio Ninesprings. She inspired listeners to get involved with developing Somerset's Local Nature Recovery Strategy and reminded us how we can all get closer and more in tune with nature. Listen in and find out more in the recording below:



Access to Services- progress

- Communication around existing services and community groups
- Consideration of transport to get to these services
- Parish directories with local input- asset mapping
- Uncover what is missing

Next steps and Actions

What actions do we need to take away?

Next Meeting

- 12th December- Venue TBC
- Theme/topic of discussion
- Working group