

Somerset Independence Plus

14th October 2024 – Chard and Blackdowns Local
Community Network



Somerset
Council



Somerset
Independence
Plus

Introduction to Somerset Independence Plus



Somerset
Council



Our Services

Somerset Independence Plus (SIP) is a Home Improvement Agency in the Housing and Adult Social Care of Somerset Council.

We take a person-centred approach to optimising independence in the most enabling ways for individuals, which will allow them to stay in their own properties for as long as is safe to do so.



Hoarding & Home Safety Checks



Somerset
Council
Somerset
Independence
Plus

Hoarding & Home Safety Checks

A specialist team of Independent Living Officers (ILO's) provide an excellent level of support for residents across somerset who suffer from a range of physical and mental health issues.

The ILO's enable the client to identify their own solutions to make informed choices for their future independence.

Hoarding & Home Safety Checks

The ILO's carry out detailed assessments of a persons' home identifying any potential hazards such as slips, trips and falls, security from intruders, potential for hoarding, fire risks and identify equipment needed which prevents the potential for falls or a recurrence of a fall.



Somerset
Independence
Plus

Home Adaptations

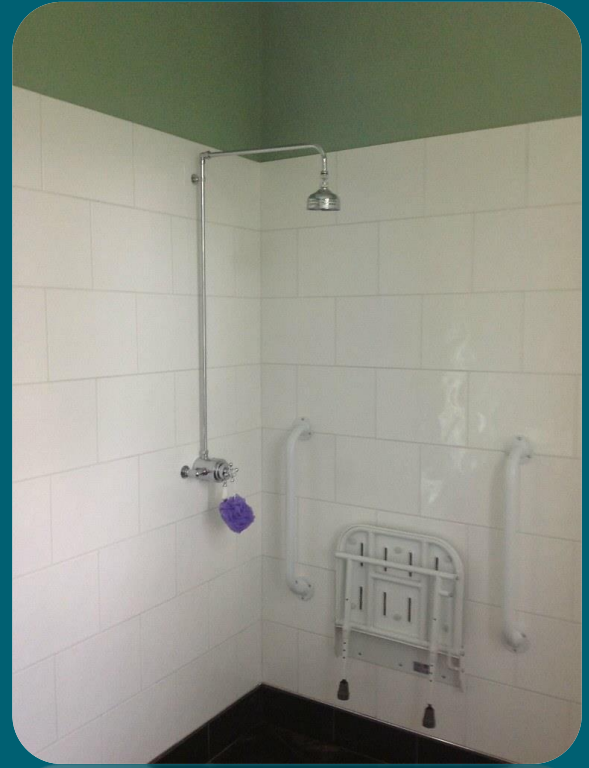


Somerset
Independence
Plus

Somerset
Council

Home Adaptations

SIP provides a range of customised solutions for people with a disability, including stair lifts, wet rooms, and heating/ventilation systems to enabling independence.



Somerset
Independence
Plus

Home Adaptations

Clients' needs are assessed on a case-by-case basis and any home adaptations which will be tailored to each service user's requirement.

SIP will receive the referral and apply for the Disabled Facilities Grant to help fund people's adaptations.



Somerset
Council

Somerset
Independence
Plus

Home Adaptations

SIP as a service will handle the application, from contractor selection and assessments ensuring a seamless end to end process.



Somerset
Independence
Plus

Energy Retrofit



Somerset
Independence
Plus

Energy Retrofit

What is Energy Retrofit?

Retrofit refers to any improvement work on an existing building to improve its energy efficiency, making them easier to heat, able to retain that heat for longer, and replacing fossil fuels sources with renewable energy and low carbon heating solutions.

Energy Retrofit

What are the benefits to Retrofit?

Retrofitting homes can lower fuel expenses, enhance energy efficiency, and maintain consistent indoor temperatures while eliminating drafts and cold spots.

Properties will increase in value not just because of the low carbon technologies but the improved heat retention and higher EPC score.

Moreover, retrofitted homes are comfortable, consume less energy, mitigate energy pressures on the power grid, health care services and decrease reliance on fossil fuels.



Somerset
Independence
Plus

Energy Retrofit

What are the Health benefits to Retrofit?

Studies have shown that poor indoor air quality leads to respiratory illnesses and worsens conditions such as COPD.

Properties with poor insulation and cold bridging have also been attributed to illnesses as well as heat loss. This can also lead to mental health issues

Homes that undergo proper retrofitting are more likely to provide healthier environments, significantly reducing the risk of illnesses related to poor indoor air quality.



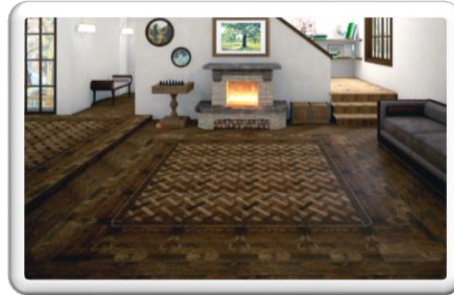
Somerset
Independence
Plus

Energy Retrofit

How do we Retrofit?

When we discuss retrofitting a home, we firstly look at the building fabrics which include:

- Walls
- Doors
- Windows
- Roof
- Floor



The fabric first approach prioritises the energy efficiency of a property right from conception, at the start of the design and development process

Energy Retrofit

What types of measures are there

We can retrofit a home in a number of ways using one or more of the following Measures:

1. External, Cavity or Internal wall insulation (with additional ventilation measures)
2. Windows and Doors replacements
3. Floor insulation where practical
4. Draft proofing
5. Ventilation (MEV and dMEV)

These measures will be considered first to improve the heat retention and improve the ventilation strategy



Somerset
Independence
Plus

Energy Retrofit

What types of Low Carbon Technologies are available

1. Solar PV



3. High Heat Retention Storage Heaters



2. Air Sourced Heat pumps





How can we get help?



Home Upgrade Grant



The Home Upgrade Grant Scheme (HUGS) is a grant-funded initiative offered by the Department of Energy Security and Net Zero, specifically designed to reduce carbon emissions in the UK. Aligned with the government's ambitious target of achieving Net Zero by 2050, HUGS extends financial support to residents, enabling them to enhance the energy efficiency of their homes.

The grant period spans from 1st April 2023, to 31st March 2025. Customer applications will close on 31st October

SIP's objective is to facilitate the utilisation of this funding for approximately 400 homes in Somerset. A dedicated budget of £7.2 million has been allocated for capital measures within the delivery timeframe. SIP is collaborating with the Centre for Sustainable Energy (CSE) as our delivery partners for the successful implementation of this project.



Home Upgrade Grant



Eligibility for the HUGS funding involves 2 important factors

- Properties **MUST** be off-gas
- EPC of the property **MUST** be grade D or below

Other eligibility criteria includes:

- Income of £36,000 or less
- Employment and Support Allowance
- Disability Allowance
- Above Pension age and in receipt of state pension
- Within an IMD of 1-3





Energy Company Obligation (ECO)

The Energy Company Obligation (ECO4) is a government backed initiative in Great Britain aimed at enhancing energy efficiency to address fuel poverty and lower carbon emissions. This scheme imposes an obligation on energy companies to implement energy-efficient measures in residential properties.

In contrast to the HUGS funding, ECO is accessible for properties connected to gas. The objective is to contribute to carbon emission reduction within the local community.

This project SIP collaborates with delivery partners, specifically the Centre for Sustainable Energy (CSE), to contribute to the success of this project.

Energy Company Obligation (ECO)

There are a number of eligibility routes for this funding scheme in which the CSE check during the customers application:

- Route 1 – Low Income (£31,000 or less)
- Route 2 – Income and Health (multiple Proxy's 1 – 6)
- Route 3 – NHS Referral
- Route 4 – Innovation (SAP band D – G)

List of measures that are included with ECO are the same as HUGS with the addition of services to gas such as

- Boiler repairs and replacement
- Radiator repairs and replacement



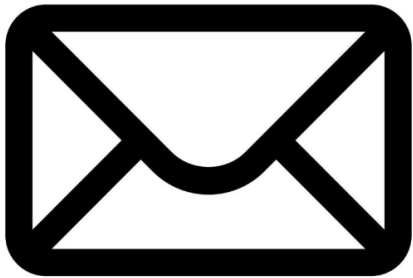
How to apply?

Home Improvements

Customers who are enquiring about grants for home adaptations can contact the Somerset Independence Plus team by email sominplus@somerset.gov.uk.

Energy Retrofit

For customers who require advice about energy efficiency, fuel poverty and energy retrofit, please contact our delivery partners at CSE by telephone 0117 934 1400 or email safeandwarmsomerset@cse.org.uk



Carbon emissions and Climate Benefits



Climate & Carbon

What are the current CO2 Emissions

As of 2019, Somerset was emitting

9,707.57 Kt CO2

A large, stylized graphic of the chemical formula CO2. The letters 'CO' are in a bold, green, sans-serif font, and the '2' is a smaller, green, sans-serif font positioned to the upper right of the 'O'. The graphic is set against a white rounded square background, which is itself on a dark teal background with a reflection effect below it.

Somerset
Council

Somerset
Independence
Plus

Somerset
Council

Climate & Carbon

Hot Air Balloon

=

1 Ton CO2

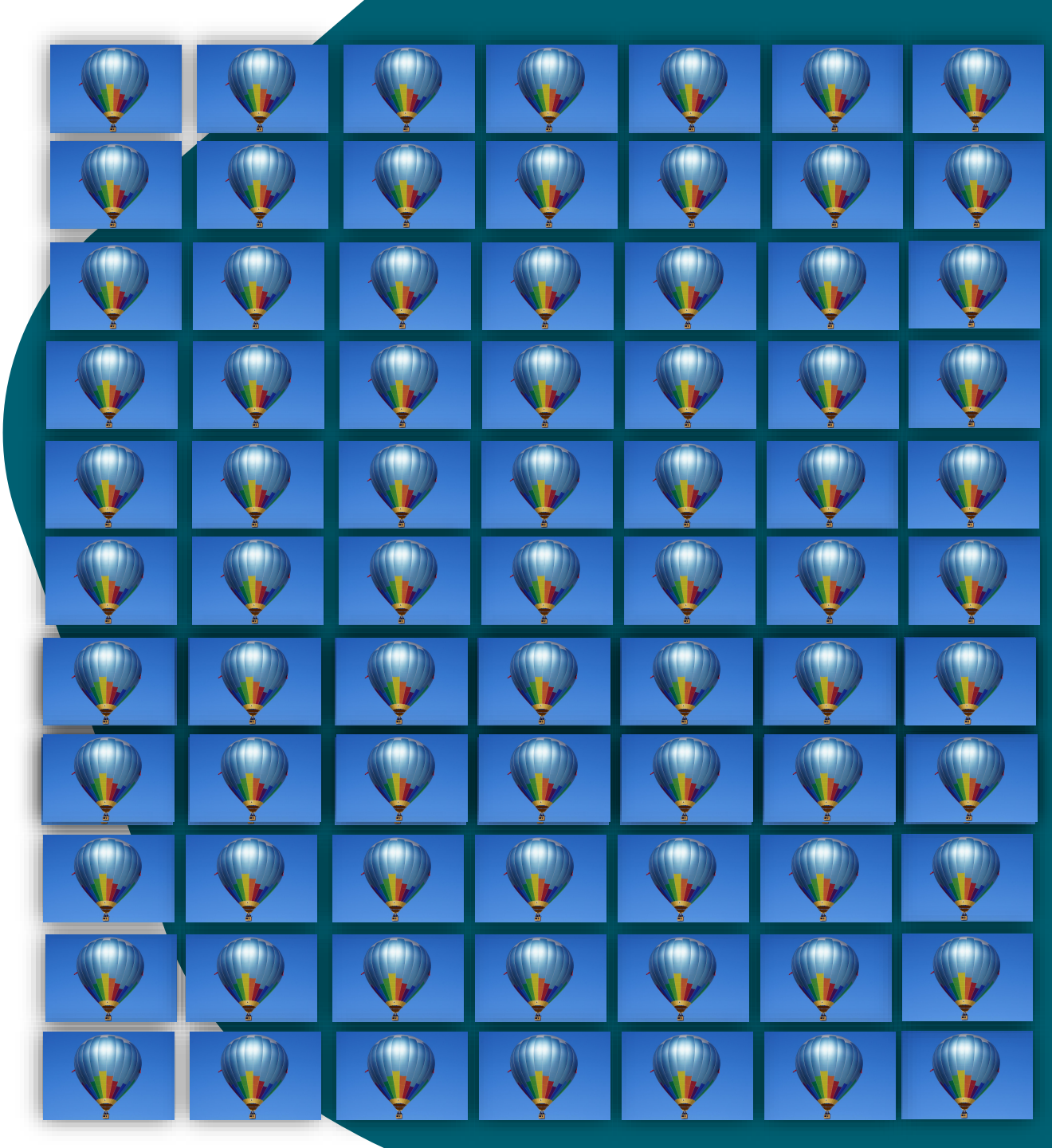


Somerset
Independence
Plus

Somerset
Council

Climate & Carbon

9,707,570 Hot Air
Balloons

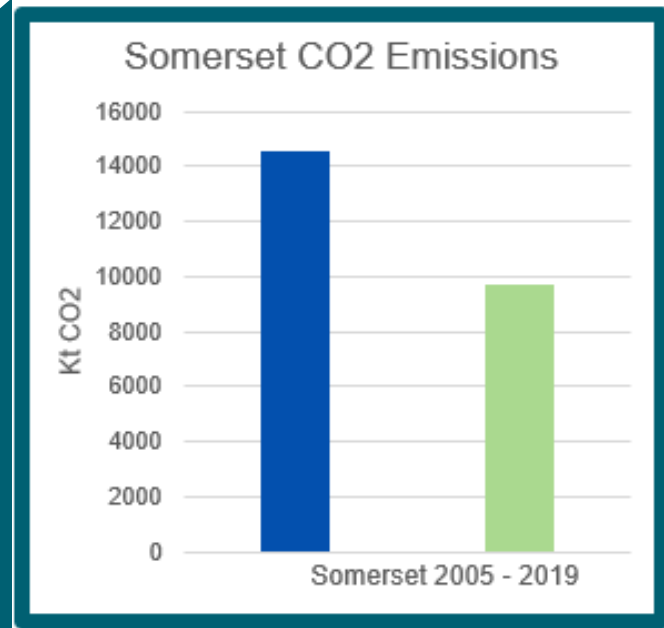


Somerset
Independence
Plus

Climate & Carbon

2005 – Somerset
14,528.78 KtCO₂

2019 – Somerset
9,707.57 KtCO₂



This counts to a
33.2% decline in
carbon emissions
from 2005 - 2019



Climate & Carbon

What about our homes?

Sedgemoor – 163.28 Kt CO₂

Mendip – 165.19 Kt CO₂

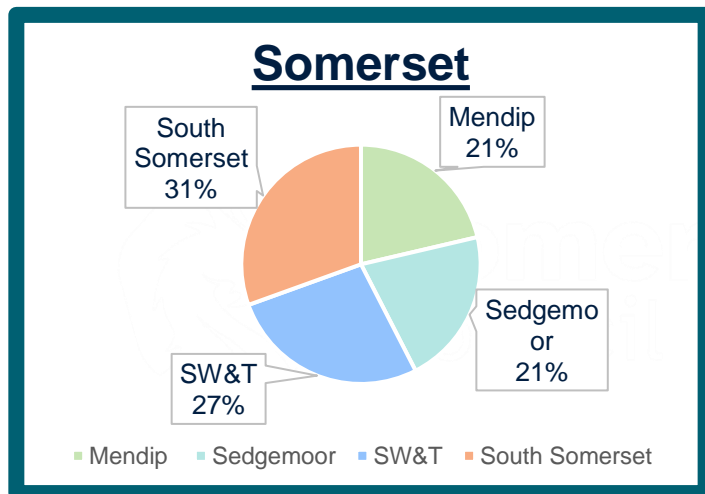
Somerset West & Taunton – 209.19 Kt CO₂

South Somerset – 236.09 Kt CO₂

Domestic Carbon
emissions

=

773.75 Kts CO₂



Conservation



SOMERSET



Somerset
Independence
Plus

Conservation

It is widely known that Somerset has large numbers of listed buildings with South Somerset and Mendip having the highest areas of properties listed with Historic England. A number are in National Landscapes (formerly AONB's). The Blackdowns being designated as a National Landscape.

Somerset Council primary course of action is to preserve our history and the stories that our buildings tell us.



Somerset
Independence
Plus

Conservation

How can Retrofit Help?

Retrofitting historic and listed properties is difficult. Typically, when a property has a retrofit assessment, the buildings fabrics are the first elements which gets reviewed.

The heat lost through the buildings fabric are the areas which are protected by Historic England. Installation of Low and Zero Carbon technologies can be difficult and sometimes require planning permission.



Somerset
Council

Somerset
Independence
Plus

Conservation

How can Retrofit Help?

Retrofit Coordinators are qualified to advise the best course of action with listed buildings. They will be able to assist with energy improvements, planning permissions, and heat retention all while preserving the historic and important elements of the building and complying with Historic England's regulations.



Somerset
Independence
Plus

Questions?



Somerset
Council