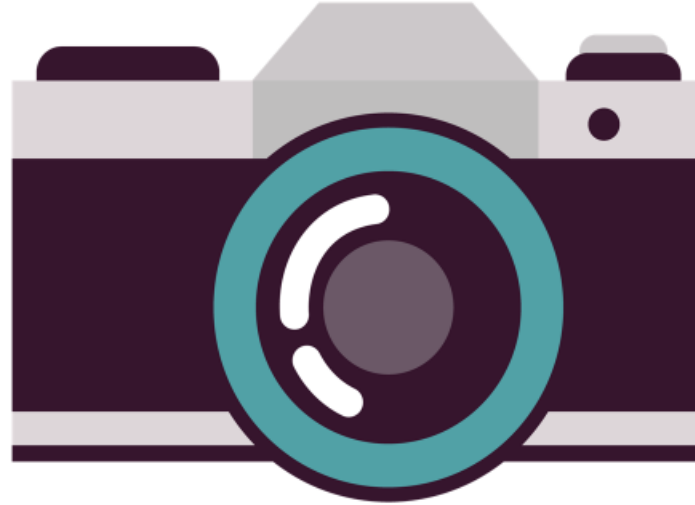




Your Local Community Network

Chard &
Blackdowns

Please Note



This event is being photographed for publicity purposes.

Images taken at this venue may be used by Somerset Council staff for promotional materials, including our website, press releases and social media posts.

If you do not want your image used, please let a member of the Local Community Network Team know. **Thank you.**

Housekeeping

- If the fire alarm sounds leave the building immediately via the signposted exits.
- Please **turn off WiFi on all your devices and don't attend the online meeting if you're in the room**, so that people attending online can get the best possible meeting experience.
- Please put all your devices on silent.
- All information is captured during online discussion and forms part of the meeting notes.
- **When speaking, please hold a microphone and speak clearly into it. The microphones work automatically when you start speaking, indicated by a green light. You don't need to press anything!**
- Please raise your hand to alert the Chair if you'd like to speak.

Agenda

1. Agree the notes of the Annual General Meeting.
2. Joint update from working groups:
 - Highways / Transport
 - Environment / Conservation
3. Guest speakers:
 - **James Divall**, Head of Climate and Natural Environment (replaces Cllr Graham Oakes)
 - **Ben Ambrose**, Community Retrofit Officer, Somerset Independence Plus
 - **Craig Daters**, Woodland Creation Officer
4. Table Talk – Environment / Conservation.
5. Anything else.

Joint Update from Working Groups



Andy Grant for Highways / Transport

Mark Palmer for Environment / Conservation

- Parish audit
- Enhanced Highways Maintenance Scheme Pilot & Volunteer Training
- Stoke St Mary's Volunteer Model (Graeme Watt)

Climate and Natural Environment



Somerset
Council

Climate & Ecological Vision

- **Carbon Neutral Goal:** Somerset Council aims to achieve carbon neutrality by 2030.
- **Resilience and Nature Recovery:** Focus on creating a climate-resilient and nature-rich Somerset by enhancing natural habitats and using nature-based solutions.
- **Community Involvement:** Emphasising the need for collective action by residents, businesses, and organisations to tackle climate change.

Somerset's approach to the climate and ecological emergency combines emission reduction with nature recovery and community-driven initiatives.



A Greener, More Sustainable Somerset

Key Areas

1. **Energy:** Promoting renewable energy sources and reducing energy consumption.
2. **Built Environment:** Decreasing emissions from homes and buildings, with plans to retrofit social housing and encourage energy-efficient building practices.
3. **Transport:** Transport accounts for 28% of emissions. Key initiatives include enhancing electric vehicle infrastructure, promoting active travel, and decarbonising council vehicle fleets.
4. **Natural Environment:** Expansion of tree cover through the Somerset Tree Strategy and restoration of peatlands for carbon sequestration.



A Greener, More Sustainable Somerset

Past, Present & Future

Key Projects & Achievements

- **Somerset Tree Strategy (2023-2033):** Aim to raise tree cover to at least the national average of 13% by 2033.
- **Renewable Energy Investment:** Projects like the Saltlands Solar Park and Energy Investment Plan 2024 are central to Somerset's decarbonization efforts.
- **Decarbonization Initiatives:** £8 million invested in decarbonizing council estates and trialing electric refuse collection vehicles.
- **Nature-Based Solutions:** Collaborating on peatland restoration, floodplain reconnection, and biodiversity enhancements.

Ongoing & Future Actions

- **Local Nature Recovery Strategy:** Developing a coordinated approach to support biodiversity across Somerset.
- **Circular Economy and Waste Reduction:** Plans to exceed national recycling targets and reduce commercial and household waste.
- **Adaptation to Climate Impacts:** Preparing for extreme weather events through community-based adaptation strategies and infrastructure planning.

Retrofit and Energy Efficient Homes



Somerset
Council



Somerset
Independence
Plus

Tree Strategy Delivery Community Projects

**Craig Daters
Woodland Creation Officer**



**Somerset
Council**

A reminder of what we're trying to achieve (over the next ten years!)

1. Create a wood culture
2. Ensure trees and woodland are resilient and adaptable
3. Expand tree, woodland and canopy cover
4. Create wood services and products
5. Create a sustainable and flexible governance



Current Work Streams

Its not just about getting ‘trees in the ground’!

- **Community action**
 - Creation of Information Hub
 - Support Schools and Community groups to plant trees
- **Growing our own**
 - Support and enable development of community tree nurseries
- **Getting trees in the ground**
 - Creating and developing ideas and opportunities within Somerset Council
 - Working with private landowners
- **Building capacity**
 - Collaborating with partner organisations
 - Develop Somerset Tree Planting Register
- **Unlocking funding**
 - Utilise national and local funding opportunities as well as private financing



We need you help...

To promote and directly support

- FREE trees for schools and community groups
- Somerset Tree Planting Register



Somerset Council

FREE trees for schools and community groups

Somerset Council and the Woodland Trust can help and support tree and hedgerow planting within school grounds and open green spaces across the county.

Tree Planting has many benefits:

- For people,
- For nature,
- For the climate.

It's easy to do and a great way to take positive action and learn about our natural world.

Planning to plant trees and need FREE expert advice? Contact our Woodland Creation team at woodlandcreation@somerset.gov.uk

To apply for FREE trees visit:
www.woodlandtrust.org.uk/plant-trees/schools-and-communities

WOODLAND TRUST | Environment Agency | Naturally Somerset | EXMOOR NATIONAL PARK | Forestry Commission

Whitehall Primary School Planting, DEFRA 11th of December 2010. Photo by Richard Faulks.



Somerset Council

Root for Somerset Make your trees count

Are you an amazing Somerset resident, group, landowner, school or business doing great work to plant trees? Celebrate your efforts and make your tree planting count.

Can we count on you?

Register them on the Somerset Tree Planting register.
It's easy to do and takes less than five minutes.

The Somerset Tree Planting Register is part of the Somerset Tree Strategy - a 10 year plan to enhance and protect Somerset trees and woodland.

Planning to plant trees and need FREE expert advice? Contact our Woodland Creation team at woodlandcreation@somerset.gov.uk

Find out more at www.somerset.gov.uk/somerset-tree-strategy

Environment Agency | Naturally Somerset | EXMOOR NATIONAL PARK | Forestry Commission | WOODLAND TRUST

FREE trees for schools and community groups

- In collaboration with the **Woodland Trust**
- Provide support to plan and plant whips to grow into small woodlands or hedgerows
- Woodland Trust provide the whips and we provide the guidance and support
- Open to all schools and any group who wish to plant on publicly accessible land



Somerset Tree Planting Register

- One single quantifiable metric within the Somerset Tree Strategy – to plant **240ha. new woodland every year for ten years**
- We know trees are being planted by many small, medium and large groups, organisations and companies but **we do not know how many, where and why**
- The Register aims to collate this unique data to help inform and guide future plans, schemes and effort
- ‘Self-service’ questionnaire open to all



The poster features a green background with a map of Somerset in orange, dotted with small tree icons. A yellow location pin with an oak leaf is positioned over the map. Text is arranged in yellow and white boxes on the left side.

Somerset Council

Root for Somerset

Make your trees count

Can we count on you?
Register them on the Somerset Tree Planting register. It's easy to do and takes less than five minutes.

Find out more at www.somerset.gov.uk/tree-strategy

Logos at the bottom include: Somerset Council, Environment Agency, Naturally Somerset, EXMOOR NATIONAL PARK, Somerset National Landscape, Forestry Commission, and WOODLAND TRUST.

Scheme details and contacts

Craig Daters and James Chapman – Somerset Council Woodland Creation Team

woodlandcreation@somerset.gov.uk

[Somerset Tree Strategy](#)

[Free Trees for Schools and Communities - Woodland Trust](#)

[Somerset Tree Planting Register - Somerset Council - Citizen Space](#)



Table Talk

A Greener, More Sustainable Somerset

What does the theme Environment and Conservation mean to our LCN?

Our Working Group originally identified the following areas to focus on:

- Hedges
- Wetlands and Land Management
- Power and Distribution
- Air Quality
- Litter/Dog Fouling, and;
- Promoting Area (Somerset Identity)

How do we feel about these now?
Should we add, remove or change any?

What should our LCN working group focus on as its main priority?

What ideas do we have for activities* we could do in our LCN that will make a meaningful difference, linked to this priority?

Which practitioners do we need to collaborate with us?

How can we lead positive action at grass roots?

***THINK SMART!** Specific, Measurable, Achievable, Realistic, and Time-bound

Any Other Business

- **Grant funding opportunity** to improve community health & wellbeing (Fodo Higginson, Community Health & Wellbeing Officer, Somerset Association of Local Councils)
- **National Highways** who manage the Strategic Road Network (motorways & major A-roads) invite you to complete a short [survey](#) to capture your views on how they engage with you.

The [survey](#) closes on **Sunday 20 October 2024**. [Start the survey](#)

- **Avon and Somerset Police and Crime Commissioner (PCC)**, Clare Moody, is developing a new Police and Crime Plan that will inform policing efforts in our area for the next 5 years. Your comments are sought on: strengthening neighbourhood policing, reducing violent crime, preventing crime, supporting victims and improving policing standards. Your perspective is crucial in shaping this Plan!

The consultation closes on **October 21**. [Complete the survey here](#).