



Your Local Community Network

Chard and
Blackdowns LCN

Agenda

1. To receive any apologies for absence
2. Declarations of Interest
3. Approve the minutes of the last meeting
4. Public Questions (not covered on the agenda)
5. Brief update from working groups
6. Presentation on the work of the Blackdown Support Group – Elizabeth McNabb
7. Discussion: To agree priorities for the next Highways meeting 8th May.
8. Discussion: Explore the potential for a Health & Wellbeing working group
9. Forward Plan – Agree items for future meetings
10. Dates of future meetings

Highway Working Group

Chair – Andy Grant

Environment & Conservation Working Group

Chair – Mark Palmer

Presentation by Tristan Coloco – Forestry England



Wild Neroche

Forestry England Wild Core Areas

Tristan Colaço- Forest Wilding Project Manager



Forest Wilding Programme

5-year programme 2022-2027

Two workstreams:

- Wild core areas
- Species reintroductions

£6 million Defra funding (3 years)

Capital funds

+ 6 FTE Forestry England staff

Additional potential funding:
corporate sponsorship, green finance, ELM



Forestry England Biodiversity Plan 2021-2026 -
fundamental principles:

- restoring biodiversity in the nation's forests by restoring fully functioning ecosystems
- restoring the natural processes which create a forest ecosystem
- prioritising conservation action beyond managing for single species or very specific habitats



Wild core areas

Corporate aspiration:

- at least 6000ha by 2026

“places of innovation to rebuild biodiversity, through restoring natural processes”

- **Reinstate** the range of natural processes necessary to restore fully functioning ecosystems
- **Accelerate** the restoration of natural processes, through the (re)introduction of biotic and abiotic drivers
- **Replicate** natural processes where they cannot yet be reinstated



Restoring Natural Processes





Forestry England

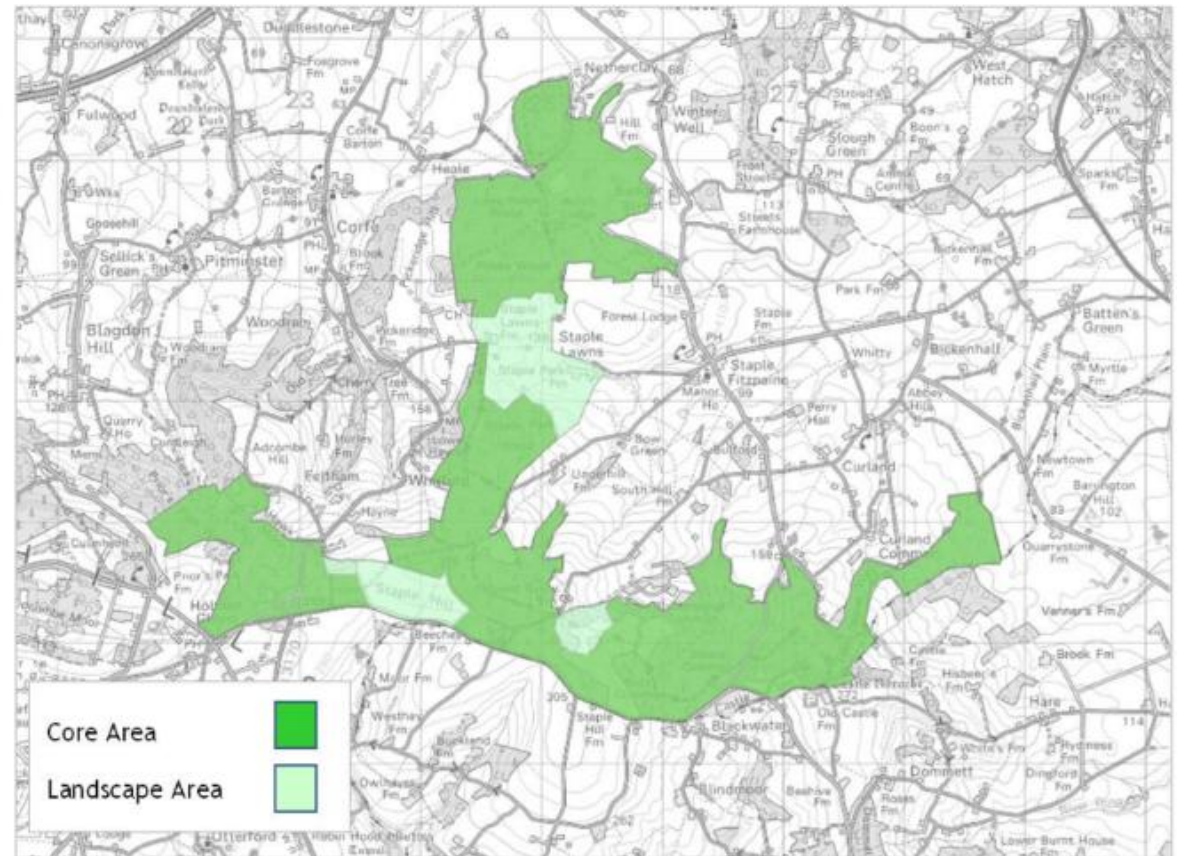
Wild Neroche

A Wild Core Area



Context

- Approx. 815ha, predominantly managed by Forestry England
- Two SSSI - Ruttersleigh SSSI and Prior's Park and Adcombe Wood SSSI
- Blackdown Hills AONB
- Mosaic of habitats, focused on the spring line of the Neroche ridgeline
- Ancient woodland and ancient trees



Woodlands of high structural complexity, with a greater range of tree species, age, density and distribution, as well as more dead wood.

Habitats whose character reflects the underlying geology and historic management of the Blackdown Hills, with complex dynamic mosaics of species rich grassland, wet flush and mire, wet heath, scrub and woodland.

A greater range of species at all trophic levels, including iconic species which have become extinct locally, regionally and nationally.



Discussion 1 - Highways Working Group

Purpose of the working group

- Share operational work plans for distribution within the wider LCN
- Identify priority areas for Highway maintenance and improvement.
- Explore new ways of working to improve response and proactive work plans.

Suggested priorities for the Highways Working Group meeting on the 8th May.

Discussion 2 - Health & Wellbeing

Explore the need for a working group to identify improvements to community health and wellbeing

Building on the presentation on the work of the Blackdown Support Group, please discuss the following:-

- Identify other partners doing similar work in your area.
- Discuss any gaps that you feel there are
- Identify top three priorities

Future Meetings

- Wednesday 3rd July 2024 – AGM (Corfe Village Hall)

All dates are provisional, subject to venue availability, and will be confirmed by publication of the agenda.

Any suggestions for accessible, low-cost public venues with Wi-Fi capability that could host our future LCN meetings are always welcome.